



**ABOVE ALL**

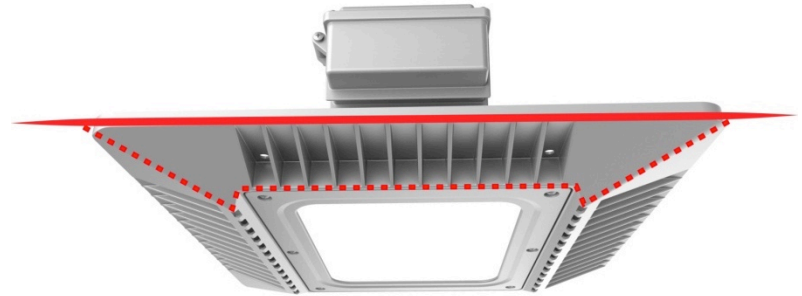
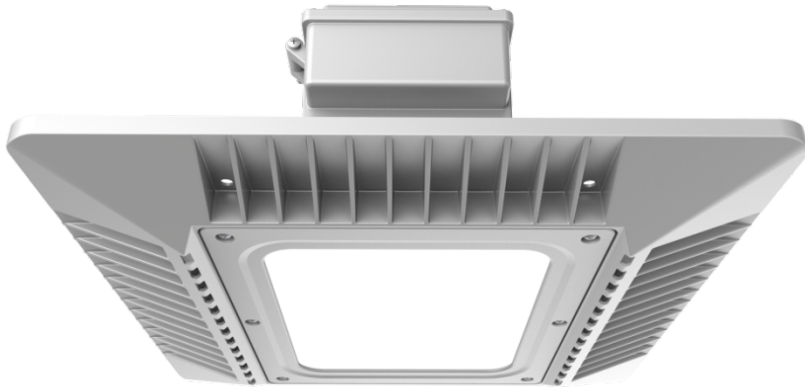
[www.AboveAllLighting.com](http://www.AboveAllLighting.com)



# LED Pad Gas Station

**April 19<sup>th</sup> 2018**

# Pad Series inspires from F-35 Stealth Fighter





- Aerodynamic & kinetic design
- Ultra- slim body
- Sense of future & modern



# Feature



**Tempered Glass** lens

**Patent** air cooling design for **No** ponding water and dusk

**Ultra-slim** body as **1.58"**

**Advanced** LED chips & driver

**Separated** driver and body for a **Better** heat **Dissipation**

# Multiple mounting options



Surface



Pendant

## Performance Data ( In accordance with IESNA LM-79-08 )

Model NO.	Measured Wattage	Ra, CCT	Output Lumen	Beam Angle	Dimming Features	LPW
PDG65501	63W	80, 5000K	9403	120	1-10V	<b>147</b>
PDG100501	95W	80, 5000K	13677	120	1-10V	<b>143</b>
PDG120501	119W	80, 5000K	17780	120	1-10V	<b>148</b>



# Application





**ABOVE ALL**

[www.AboveAllLighting.com](http://www.AboveAllLighting.com)

**Thank You For Viewing.**