

LD+A

The magazine of the Illuminating Engineering Society

for Outdoor Projects

November 2017 www.ies.org

*****SCH 3-DIGIT 085
 GREG SCHMALZ
 SCHMALZ COMMUNICATIONS
 84 NICOLE DR
 BRICK NJ 08724-3448

P-1 P-18

2017

PROGRESS REPORT

The Progress Committee's mission is to keep in touch with developments in the art and science of lighting throughout the world and prepare a yearly report of achievements for the Society. Acceptance is based on an impartial judging process used by the committee to evaluate each submission on its uniqueness, innovation and significance to the lighting industry. There were 240 submittals in 2017; 118 were accepted into the report.

IES PROGRESS COMMITTEE

Leslie Davis, LC

Chair
Leslie Davis Lighting Design

Jered Widmer

Vice-Chair
The Lighting Practice

Shaun Fillion

Secretary
RAB Lighting

Mark Benguerel

Finelite, Inc.

George Doukas

Electronic Theatre
Controls

Mark Lien, LC

Staff Liaison

Anthony Serres, LC

Philips Lighting

Greg Bennorth

Universal Lighting
Technologies

Jay Eissner, P.E.

Visa Lighting

Michael Lunn

Eaton Lighting

**Sandra Stashik, P.E.,
FIES**

Acuity Brands

Kristin Bernick

Diversified Lighting

**John Green, P.E., LC,
FIES**

Lambda 530 Consulting

Tim O'Keefe, LC

Luminii Corp.

Tejal Thakur, LC

Lightspek

Rob Cilic, LC

LEDVANCE (SYLVANIA)

Peter Jacobson

Con Edison

Edwin Rambusch
Rambusch Decorating
Co.

**Paula Ziegenbein, LC,
Assoc. IALD**

Hartranft Lighting
Design

Boyd Corbett

Lumato Lighting

Rick Leeds

Flos USA, Inc.

Dyke Riffle

Riffle & Associates

Kim Daley

Hartranft Lighting
Design

Howard Lewis

Spectro Lume, LLC

**Shelli Sedlak, LC,
LEED AP**

Current, Powered by GE

Ardra Zinkon

Tec Studio

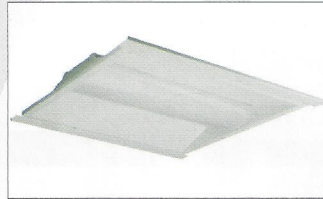
2017 PROGRESS REPORT

ACCESSORIES - METERING EQUIPMENT

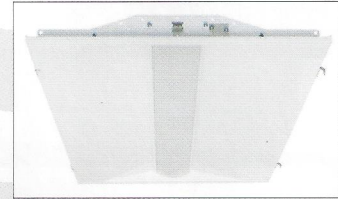
The PG100N Handheld Spectral PAR Meter from **United Power Research Technology Corporation** is a customized PAR meter for the measurement of grow light spectral qualities. Photosynthetically Active Radiance is measured along with the spectral wavelength between 380 and 780 nanometers. General lighting data such as CCT, CRI and LUX are included within the 40 different lighting measurement parameters.



ACCESSORIES - RETROFIT KITS



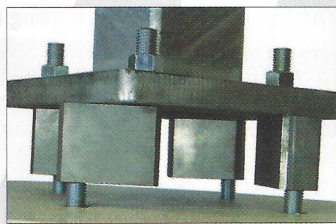
An LED Human Centric Troffer Retrofit Kit was submitted by **Above All Lighting**. This is the first retrofit troffer submitted to the committee with tunable white lighting and wireless control via remote or smartphone or tablet app. The color temperature range is 2700K-6500K with a CRI of over 80.



Orion Energy Systems introduces the Orion ISON LDRMH, featuring visible light with technology shown to be effective in removing bacteria such as Staph, MRSA, E. coli and C Diff through the use of a precise spectrum of light. The troffer incorporates an antimicrobial coating and includes the option for color tuning.

ACCESSORIES - OTHER

New from **Light Pole Systems** is the Anchor Bolt Adapter. Its unique spacer allows a smooth installation in fitting poles when site conditions have a variance in the bolt pattern. This eliminates the need to demolish the existing fitting or use of custom adapter plates.

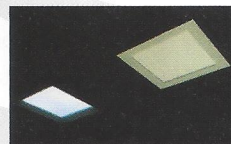
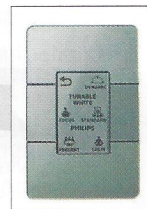


Sky Technologies introduces the SkyPlug Mating Device. This is the first quick coupling jack system providing a simple plug-and-play installation of luminaires, avoiding traditional wiring and minimizing labor. The National Electrical Code has modified the definition of the receptacle to accommodate the use of this device.

LIGHTING SYSTEMS

Lighting systems have the potential for increased functionality and energy savings.

The Antumbra Display by **Philips Lighting** was recognized as the first to offer tunable white through Power over Ethernet. Color temperature can shift from 2700K to 6500K while having the ability to keep intensity constant. The product can also follow a customized daylight curve over a 24-hour time period. A research study conducted at the University of Twente with the European version indicated an increase in concentration and reading speed and a decrease in frequency of errors through the use of color tuning and intensity shifts.



New from **Acuity Brands Lighting** is the LightFlex CCT, the industry's first tubular daylighting solution that uses an integrated remote phosphor panel to adjust cool daylight CCTs to warmer CCTs between 3600K to 3700K depending on the time of day. The integrated remote phosphor panel absorbs blue light and re-emits longer wavelengths to produce high quality warmer CCTs with high efficiency and uniformity.