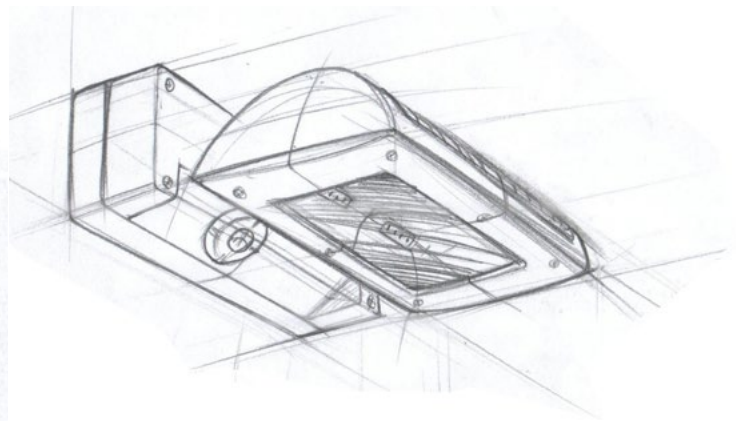
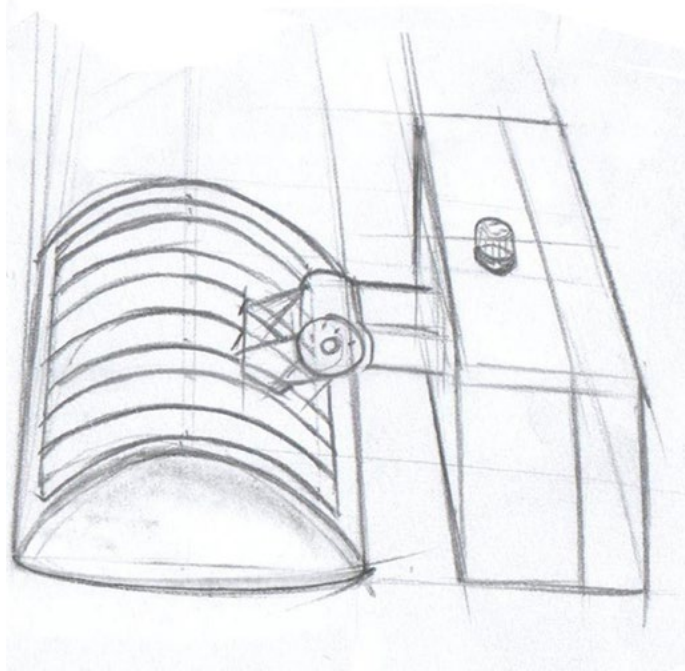


NEW ERA FOR WALL PACK

Unique & Sleek Design

*Better Lighting
Better Life*

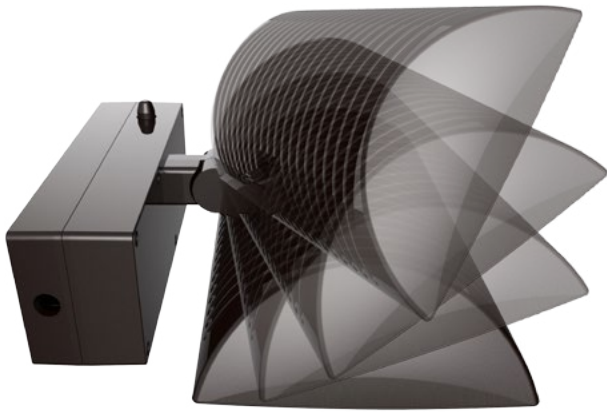


ARCHITECTURE DESIGN

The LED V-line Wall pack are designed with a high quality die cast housing. Durable chip and fade resistant powder coat finish. Efficient design separates the driver from the LED to minimize heat, air cooling design of aerodynamic and modern appearance. Adjustable head for precise aiming.

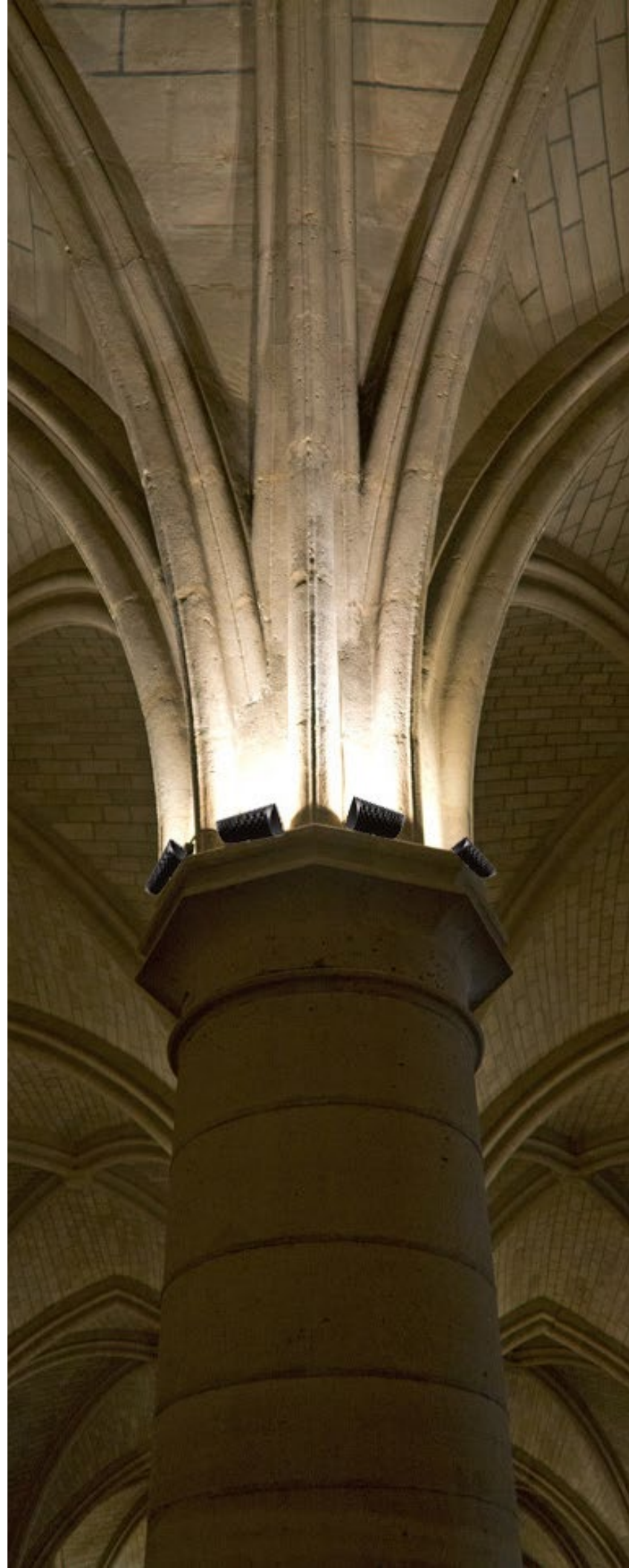
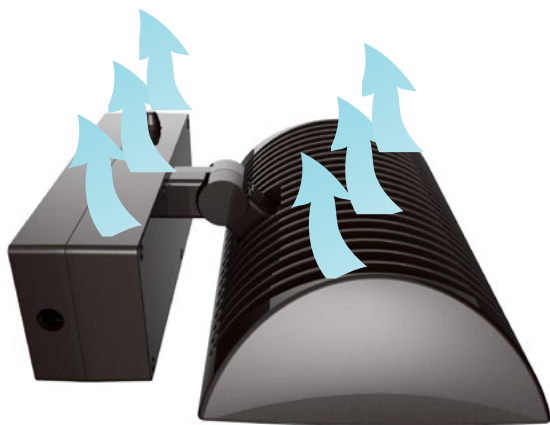
ADJUSTABLE HEAD UP & DOWN LIGHT

The LED V-line Wall pack are designed with a high quality die cast housing. Durable chip and fade resistant powder coat finish. Efficient design separates the driver from the LED to minimize heat, air cooling design of aerodynamic and modern appearance. Adjustable head for precise aiming.



THERMAL MANAGEMENT

Streamlined Heat Sink Fins
Main body separates from the driver
Very large heat dissipation area



CONSTRUCTION FEATURES

EBU J-box:

Emergency battery back up

Power Supply J-box:

Reliable led power supply, integral 0-10V dimming.

Trunnion:

150° swivel design

Body:

Die cast aluminium housing

LEDs:

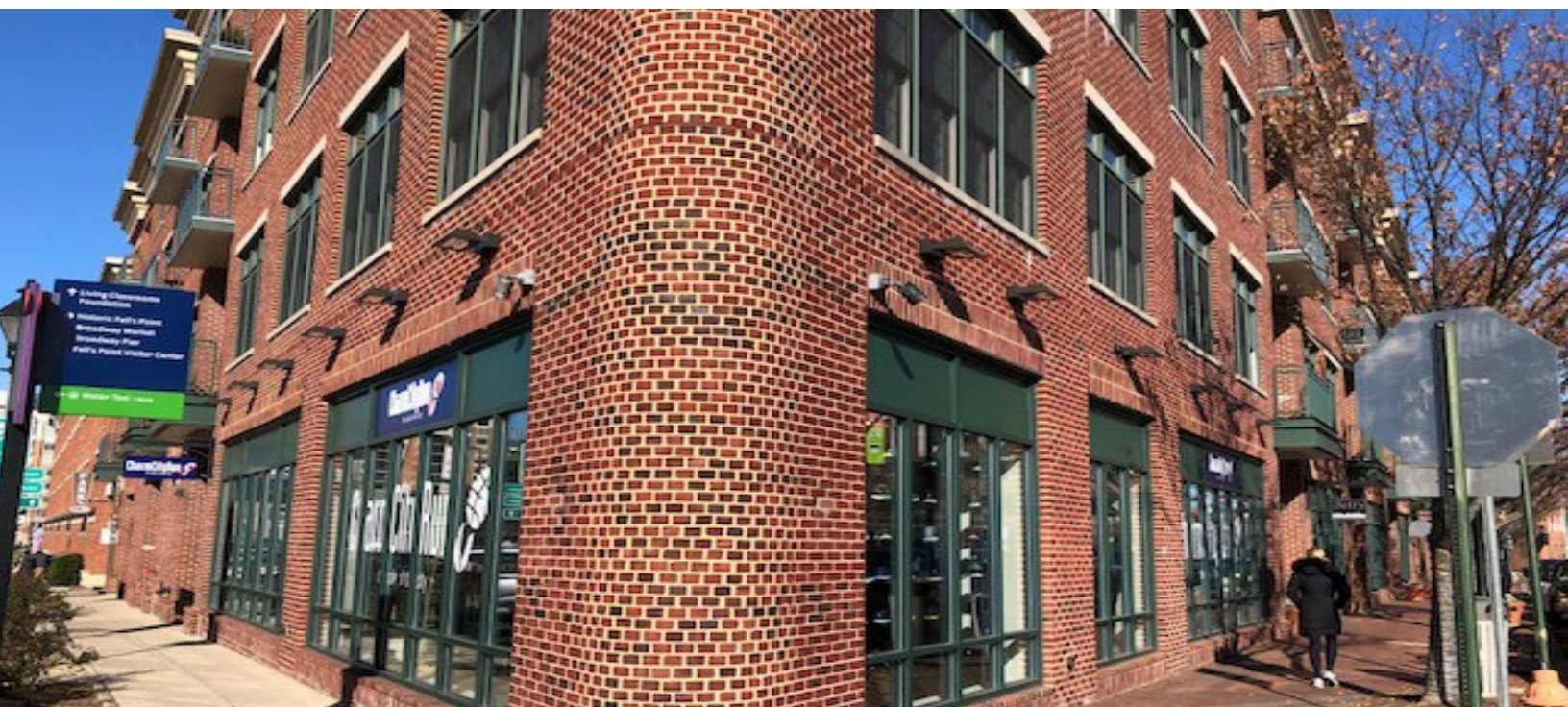
High-output, long-life LEDs

Optional Motion Sensor:

Multi-level motion sensor. Energy Savings.

Lens:

Tempered glass lens. Won't turn yellow and crack.





Ordering Information

Example: WL26501

Wall Light	Watts	CCT	Voltage	Controls	Lens Type
WL	26 - 26 Watts	30 - 3000K	1 - 120-277V	MS - Multi Level Motion Sensor	L3B - Black L3 lens
	38 - 38 Watts	40 - 4000K	4 - 120V	PC - Photo Control	
	52 - 52 Watts	50 - 5000K	5 - 277V	EBU - Emergency battery backup	
	70 - 80 Watts		6 - 347V/ 480V		
	100 - 100 Watts				
	120 - 120 Watts				

ABOVE ALL Lighting Inc.

1501 Industrial Way N.
Toms River, NJ 08755

Tel: 866-222-8866

For inquiries, please send an e-mail to
info@aboveallighting.com

Do you want to become a supplier
please send an e-mail to
info@aboveallighting.com

