

PAD Garage and Canopy



PRODUCT FEATURE

1. Surface or pendant mount
2. Applications include: Gas station canopy, low bay application, truck stops and drive through at banks and restaurants
3. Uniform color consistency
4. Slim low profile design
5. Easy mounting and virtually service free

SPECIFICATION

Dimension

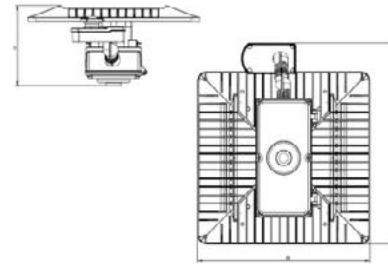
L-W-H:(including driver)

18.98"x16.38"x7.68"

L-W-H:(excluding driver)

18.98"x16.38"x1.58"

Max. Weight: 13.5 lbs



Ordering Information

Example: PDG120501-MS

PAD Design	Watts	CCT	Voltage	Controls
PDG	65	30-3000K ¹	1-120-277 V	MS-Multi-level Motion Sensor
	65 Watts	40-4000K	6-347/480V	
	100	45-4500K		
	100 Watts	50-5000K		
	120			
	120 Watts			

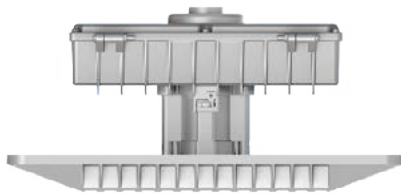
Notice:

1. No DLC listing for 3000K.

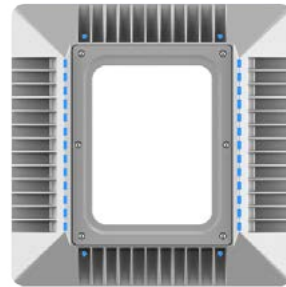
2. External Motion Sensor.

* Standard Finish as White. Special Order as other finish color - Please Ask Customer Service for Details.

FEATURES



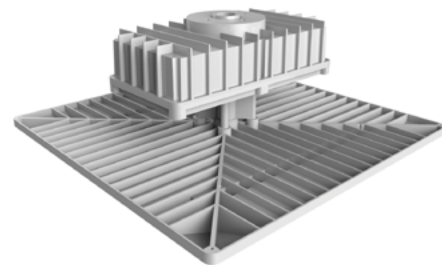
Slim design less than 2"



Patented air cooling design
weep holes: solving the
problems of water
on the back of the fixture and
better heat dissipation



Surface/ pendant mount



Separated driver box : A better
thermal design

PERFORMANCE DATA

LUMEN OUTPUT

Lumen values are measured by third party certified laboratories performed in accordance with IESNA LM-79-08 as well as Lighting Facts listed.

Watts	Lumen Output	AC Input 120V	Measured Watts	CRI	Beam Angle	LPW
65W	9403	0.60A	63W		120	147
95W	13677	0.92A	95W	>80		143
120W	17780	1.10A	119W			148

Lumen Ambient Temperature (LAT) Multipliers

Use these factors to determine relative lumen output for average ambient temperature from -40-104°F (-40-40°C)

Ambient		Multiplier
Celsius	Fahrenheit	
0	32	1.02
10	50	1.01
20	68	1.00
25	77	1.00
30	86	1.00
40	104	0.99

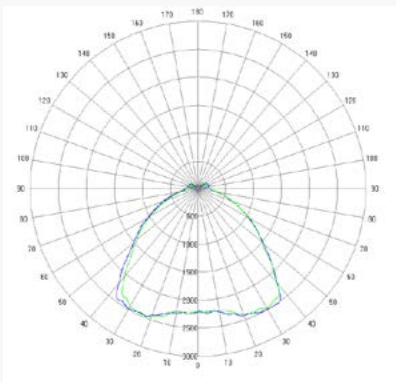
Projected LED Lumen Maintenance

Data references the extrapolated performance projections for the LED PAD garage canopy in a 77°F ambient, (tested per IESNA LM-80-08 and projected per IESNA TM-21-11).

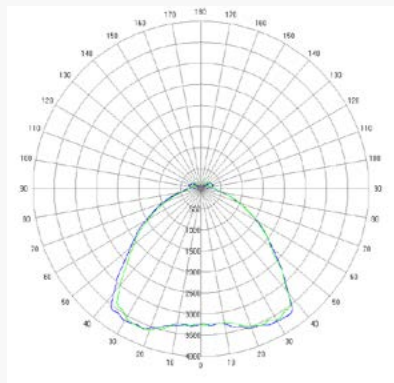
Operating Hours	0	1,000	9,000	23,000	115,000
	Lumen Maintenance Factor	1.0	0.98(L98)	0.96(L96)	0.92(L92)

Photometry

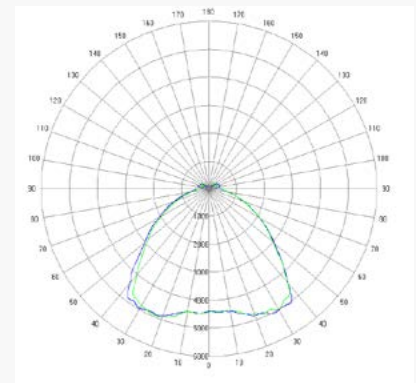
All published luminaire photometric testing performed to IESNA LM-79-08 standards by a NVLAP certified laboratory.



65W



100W



120W

PRODUCT SPECIFICATIONS

ELECTRICAL SYSTEM

- Input Voltage: 120-277VAC, or 347/480VAC
- 50/60Hz
- Operating temperature range: -40°C-40°C
- Power Factor: > 0.9 at full load
- Total Harmonic Distortion: < 20% at full load
- Intergal 6KV surge suppression protection standard

System Wattage	Max THD (%)	Power Factor	Power Efficiency	Replaces/ Equiv.(MH)
65W	20	>0.9	90%	250W
95W	20	>0.9	90%	400W
120W	20	>0.9	90%	400W-600W

Ref#: 10010-10914

CERTIFICATIONS AND QUALIFICATIONS

- cETLus Listed
- IP65 rated
- DLC premium qualified
- RoHS compliant

Warranty

Ten year limited warranty. Full warranty terms located www.abovealllighting.com/warrantystatements

Note: Specifications subject to change without notice.