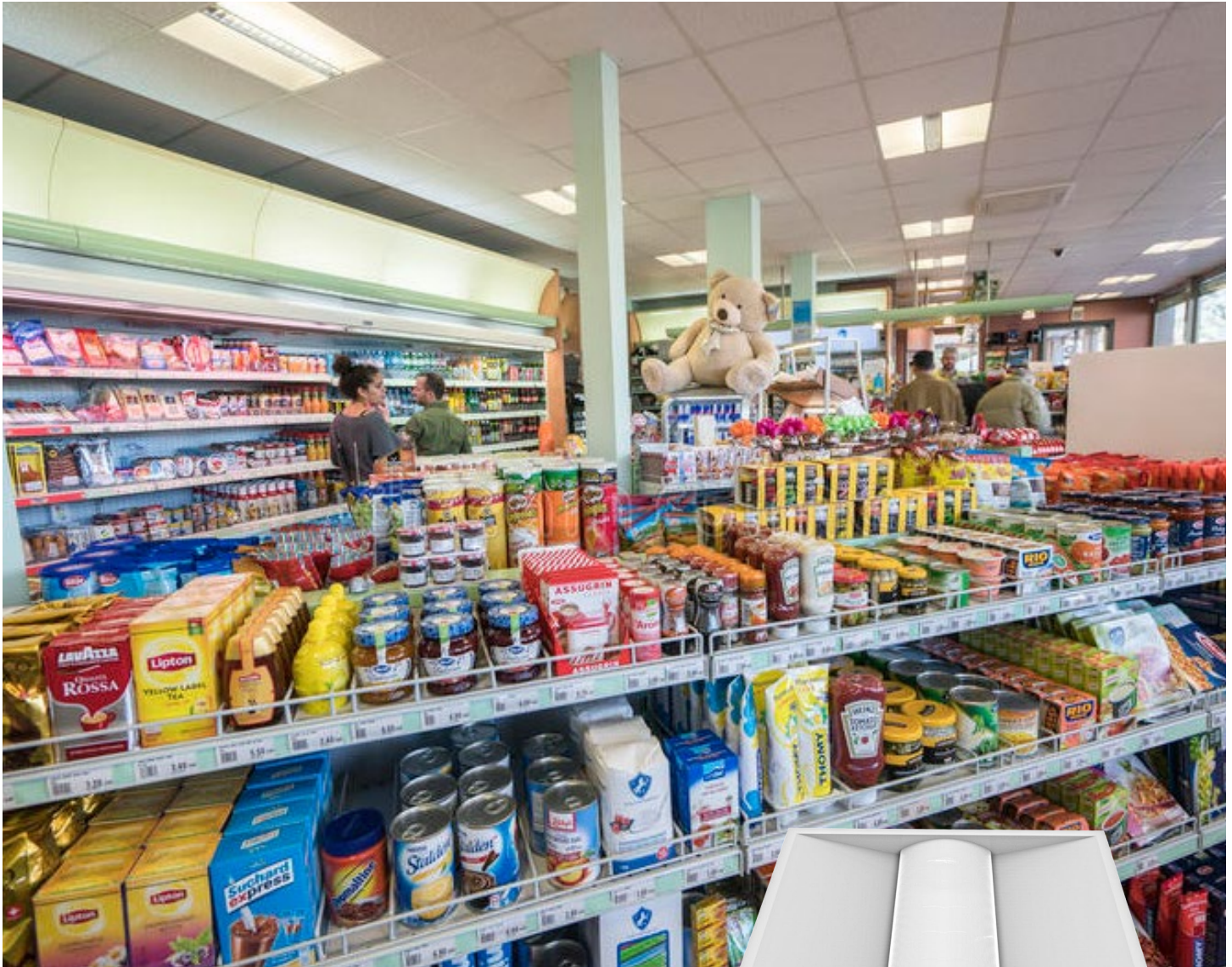


## Gas Station Indoor Application Solution



### Troffer

[Click to View](#)

- Designed with the look of a traditional fluorescent fixture
- Design for drop ceilings in commercial and institutional applications
- Reducing maintenance and energy usage costs
- Universal voltage 120-277V
- 1-10V dimming





## Gas Station Indoor Application Solution



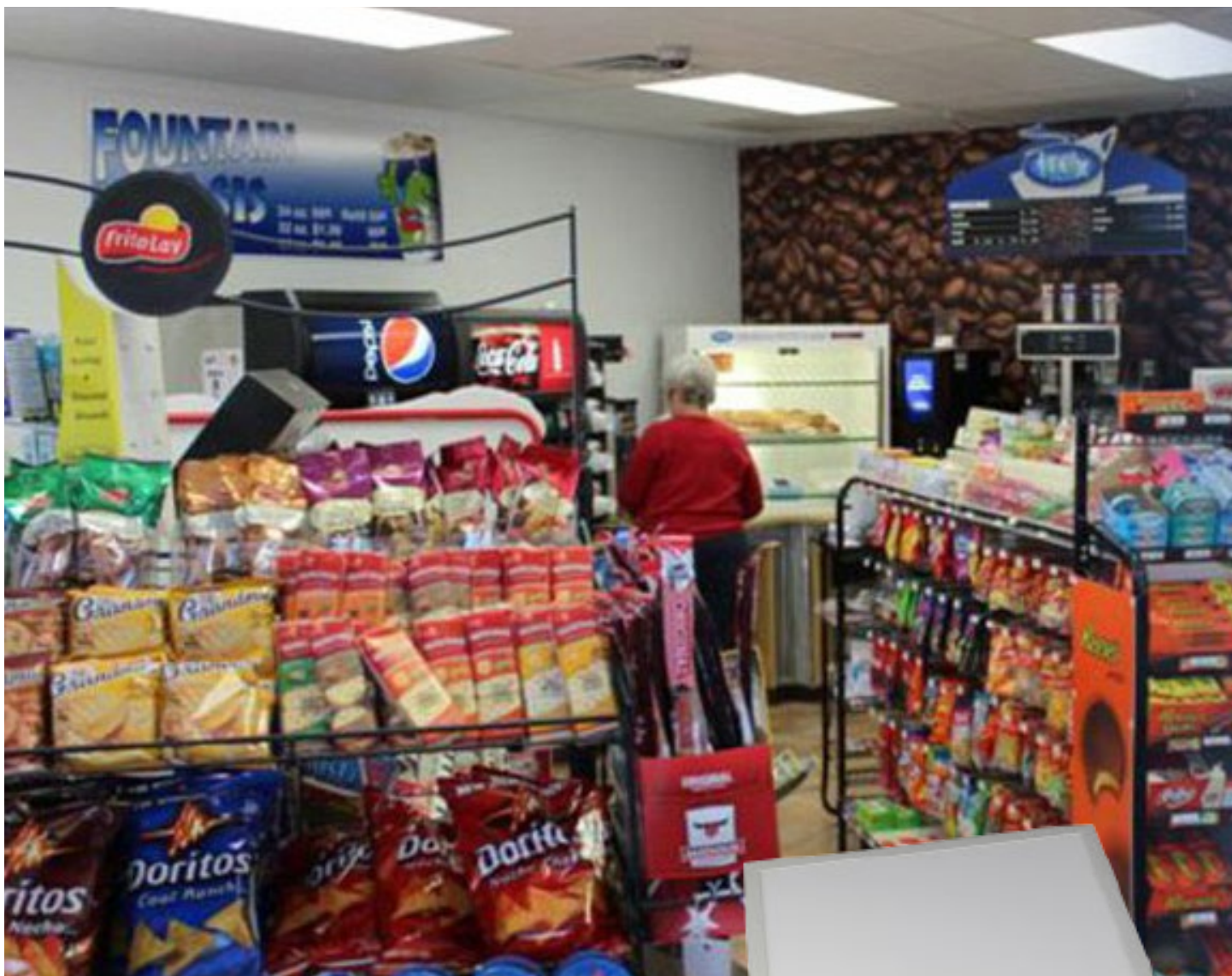
### LED Troffer Retrofit Kits

[Click to View](#)

- Special design can fit most of the FL T8/T8/U-bent troffer housings
- Easy installation. Only need to remove the old troffers' covers and the ballast, and then connect the input voltage wires and safety hooks
- Consistent light distribution as FL lamps
- 125lm/W high efficacy
- Universal voltage 120-277V
- 1-10V dimming
- Replace traditional fluorescent troffers in lay-in or T-grid ceilings in a variety of commercial and institutional applications



## Gas Station Indoor Application Solution



### Flat Panel

[Click to View](#)

- It is designed for standard T-bar and narrow grid drop ceiling
- Ultra-thin profile and edge-to-edge design with a seamless connection structure
- Extrusion Aluminum and PC diffuser enable even light distribution
- High efficiency up to 110lm/W
- Standard 1-10V dimming from 10% to 100%
- Operating Temperature: -20~40°C (-4~104°F)

