

PAD Canopy Light

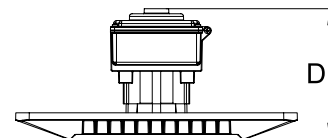
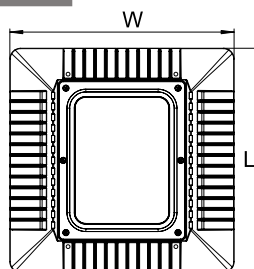


PRODUCT DESCRIPTION

The PAD series is well designed to be superior illumination performance under exterior ceiling mount and canopy applications. PAD series also provides LED solutions for garage applications requiring higher light levels, including entrances, and for garage areas with high ceilings. It is ideal for petroleum gas stations, soffits, drive-through ATMs, and hotel/airport drop-off centers. It also can be used as high bay light. It has an extreme high efficiency as up to 148 lm/W. Its patented air cooling design is unique for no ponding water and dusk.

SPECIFICATION

Including Driver	Excluding driver
Depth: 7.68"	Depth: 1.58"
Width: 16.38"	Width: 16.38"
Length: 18.98"	Length: 18.98"
Max. Weight: 13.5lbs	



Ordering Information

Example: PDG120501

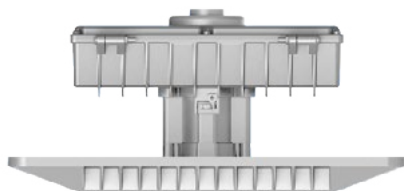
PAD Design	Watts	CCT	Voltage
PDG	65	30-3000K¹	1-120-277 V
	65 Watts	40-4000K	6-347/480V
	100	50-5000K	
	100 Watts		
	120		
	120 Watts		

Notice:

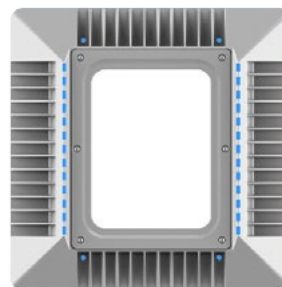
1. 3000K DLC Premium is unavailable

* Standard Finish as White. Special Order as other finish color - Please Ask Customer Service for Details.

FEATURES



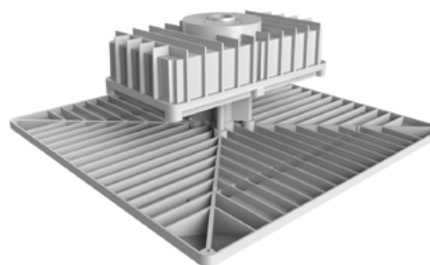
Slim design less than 2"



Patented air cooling design
weep holes: solving the
problems of water
on the back of the fixture and
better heat dissipation



Surface/ pendant mount



Separated driver box : A better
thermal design

PERFORMANCE DATA

LUMEN OUTPUT

Lumen values are measured by third party certified laboratories performed in accordance with IESNA LM-79-08 as well as Lighting Facts listed.

Watts	Lumen Output	AC Input 120V	Measured Watts	CCT	CRI	Beam Angle	LPW
65W	9400	0.60A	63W	5000K	>80	120	149
100W	13670	0.92A	95W	5000K	>80	120	144
120W	17780	1.10A	119W	5000K	>80	120	149

Lumen Ambient Temperature (LAT) Multipliers

Use these factors to determine relative lumen output for average ambient temperature from -40-104° F (-40-40°C)

Ambient		Multiplier
Celsius	Fahrenheit	
0	32	1.02
10	50	1.01
20	68	1.00
25	77	1.00
30	86	1.00
40	104	0.99

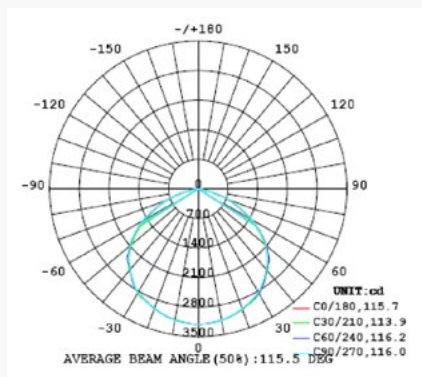
Projected LED Lumen Maintenance

Data references the extrapolated performance projections for the LED PAD Canopy Light in a 77°F ambient, (tested per IESNA LM-80-08 and projected per IESNA TM-21-11).

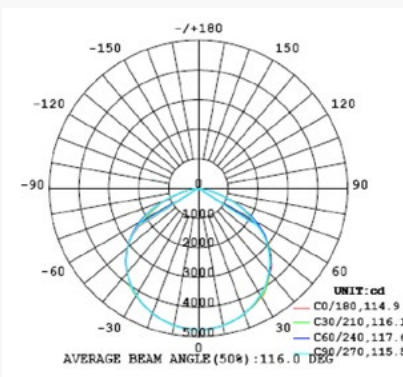
Operating Hours	0	11,000	18,000	32,000	121,000
Lumen Maintenance Factor	1.0	0.98(L98)	0.96(L96)	0.92(L92)	0.70(L70)

Photometry

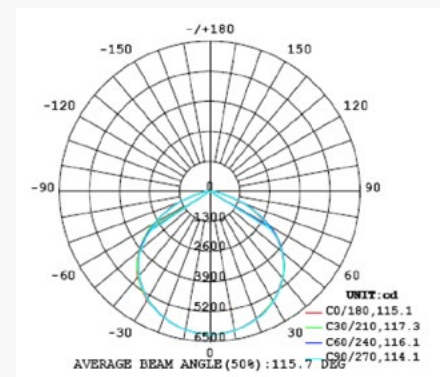
All published luminaire photometric testing performed to IESNA LM-79-08 standards by a NVLAP certified laboratory.



65W



100W



120W

PRODUCT SPECIFICATIONS

ELECTRICAL SYSTEM

- Input Voltage: 120-277VAC, or 347/480VAC
 - 50/60Hz
 - 1-10V dimming
 - Minimum ambient -40°C, maximum ambient 40°C
 - Power Factor: > 0.98 at 120Vac
 - Total Harmonic Distortion: < 20% at full load
- Intergal 6KV surge suppression protection standard

CERTIFICATIONS AND QUALIFICATIONS

- cETLus Listed
- IP65 rated
- DLC Premium qualified. Please refer to <http://www.designlights.org/QPL> for most current information
- RoHS compliant

Ref#: 10010-10108

Warranty

Ten year limited warranty. Full warranty terms located www.abovealllighting.com/warrantystatements

Note: Specifications subject to change without notice.