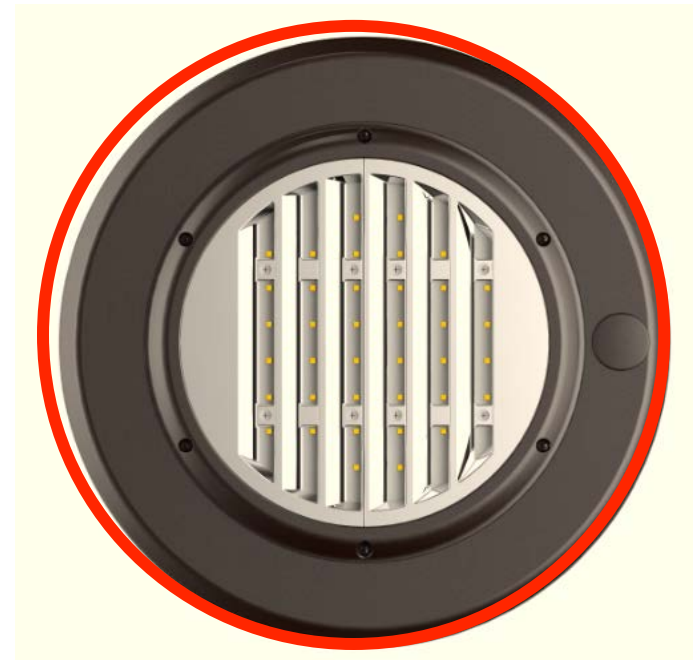
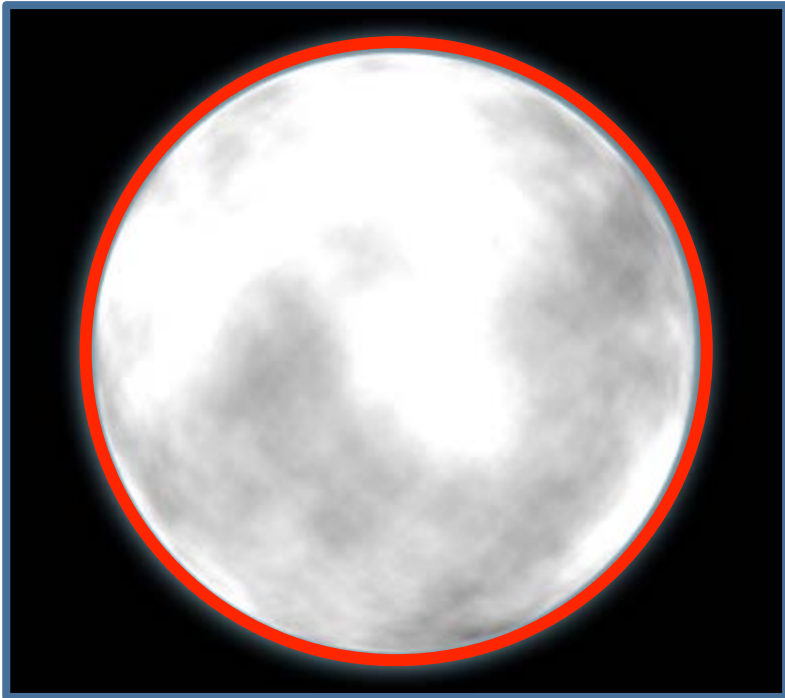




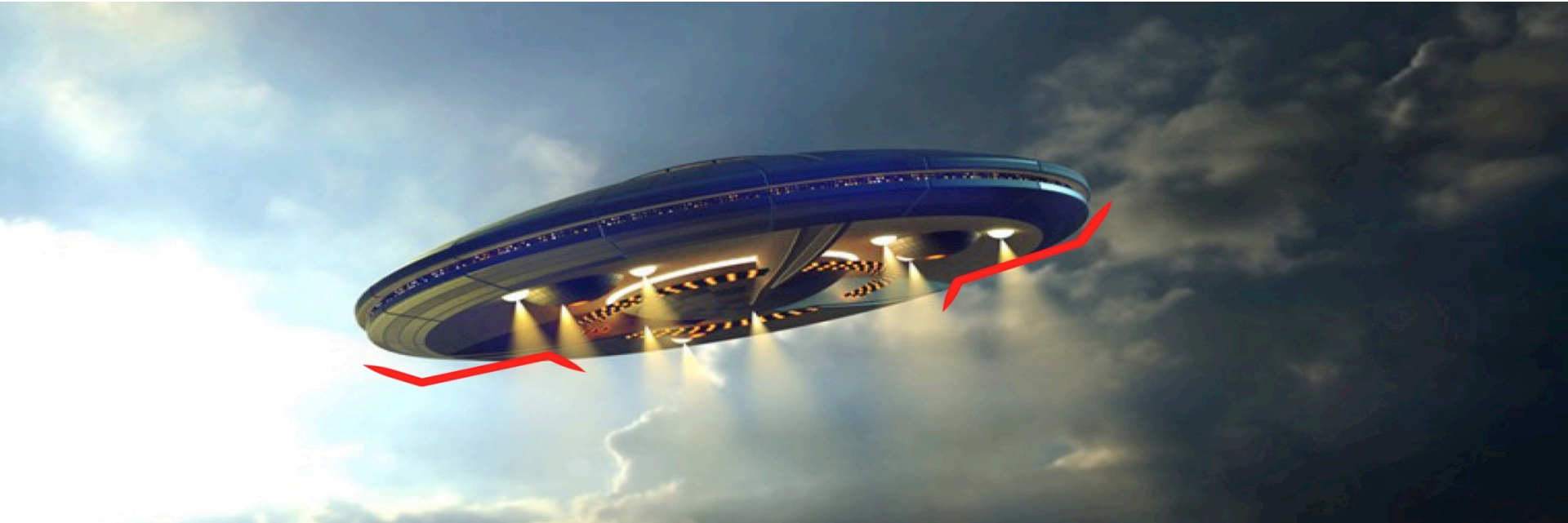
Versatile Moon Series

2017

Idea from....



Idea from....

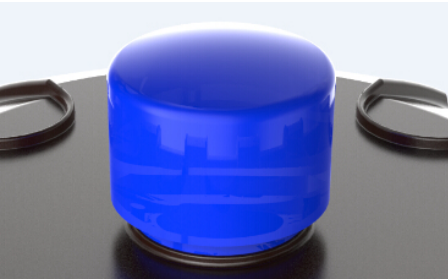
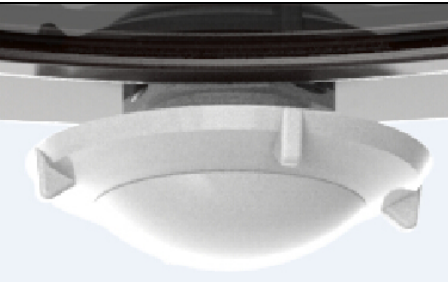


Idea from....



Technical Infos

| Wattage | 35W | 50W | 75W | 100W | 135W |
|---------------|---|------------------------|-------------------------|--------------------------|--------------------------|
| Equivalent | 150 MH | 175 MH | 250 MH | 320 MH | 400 MH |
| Lumen output | 3850lm PT 4725lm LB | 5500lm PT 6750lm LB | 8250lm PT 10125lm LB | 11000lm PT 13500lm LB | 14870lm PT 17500lm LB |
| LPW | PT $\geq 110\text{lm/W}$ 、 LB $\geq 135\text{lm/W}$ | | | | |
| CCT | 3000K 4000K 5000K | | | | |
| Distribution | Type II Type III Type V | | | | |
| Voltage input | 120-277V/347V/480V | | | | |
| EPA | 0.7 Sq.Ft. | | | | |



Features & Benefits

- ✓ EPA is **0.7Sq.Ft.** minimizing wind load.
- ✓ Self-cleaning top design, not easy for ponding and dust.
- ✓ **Patented** bracket design, adjusted freely which can simplify the installation.
- ✓ Integrated motion sensor, programmable and multi-level.
- ✓ Optional 7-pin receptacle and photocell.
- ✓ Versatile mounting options for post top, low bay and packing garage light.
- ✓ Internal **10kA** surge suppression protection.
- ✓ **12 years** limited warranty under the ambient of -40°F to 104°F and 10 years limited warranty under the ambient of -40°F to 122°F.

- **Special reflector design**
high performance optics



- **Tempered glass lens**
doesn't fade and discolor



Easy Installation

— Same main body with various mounting options



**Low Bay
Pendant Mount**

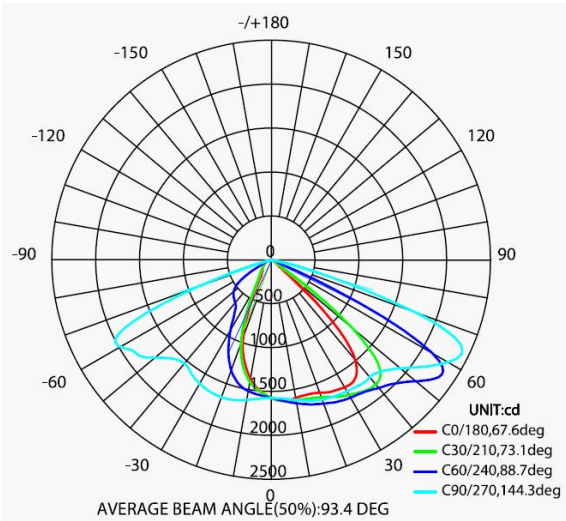


**Post Top
Pole Mount**

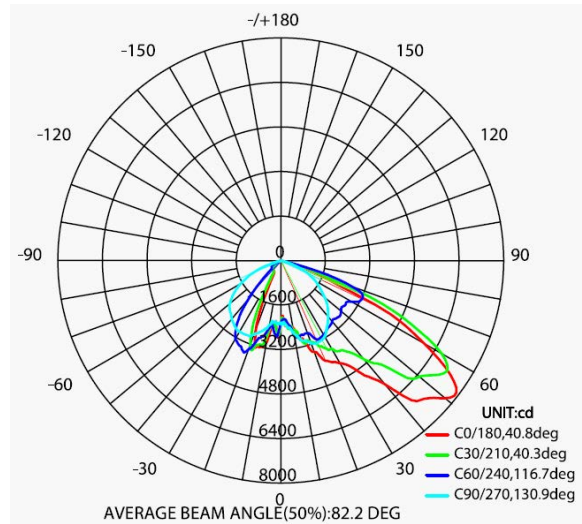


**Parking Garage/Canopy
Surface Mount**

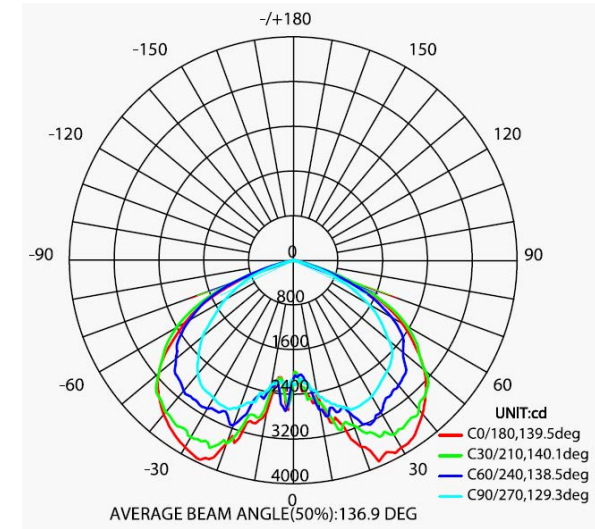
Optics



Type II



Type III



Type V

Accessories-(Order Separately)



MPT-4RPA
4"OD round pole
adapter



MPT-HSS
House side shield



Moon Application:

- ✓ Post Top Light
- ✓ Low Bay
- ✓ Parking Garage Light

Applications



POST TOP



LOW BAY



PARKING GARAGE/CANOPY



Thank you!