

# TUNABLE WHITE TECHNOLOGY

## Above All Lighting Fixtures + Echoflex Lighting Control System

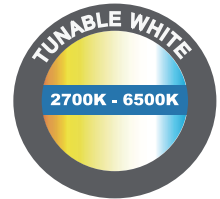
The ELED2 tunable-white fixture controller, a complete stand-alone lighting controller is compatible with industry standard 0-10V dimming controls. The controller provides two 0-10V output channels. Channel one is for dimming intensity (brightness) control and channel two is for tunable-white color control, which features 0-10V intensity dimming and tunable white color control from 2700K to 6500K, requiring only remote linked devices to provide input on light level, color temperature, occupancy state and switch operations.

### 0-10V Brightness Tunable

10% 100%

### 0-10V CCT Tunable

warm 2700K cool 6500K



# tunable white Lighting Fixtures

## Center Basket Troffer

LED recessed luminaire

The LED Center Basket Troffer is designed to replace the traditional 2x2 and 2x4 fluorescent troffer. It is suitable for office, super market and hotel interior decoration.

- CCT ranges: 2700K-6500K
- Seamless design to keep bugs out
- PMMA diffused lens



## Vision Strip Light

LED Surface luminaire



VISION LED strip light have a sleek design with diffuser lens. Wide size is ideal to replace the 2-lamp T8. Standard lengths come in 4ft and 8ft. Wide lumen range from 4,000lm to 11,000lm. Optional accessories include reflector, wire guard, V-hook and quick surface mount kits. It can be widely used in stairwell, warehouse, office, garage, display shop and other commercial applications.

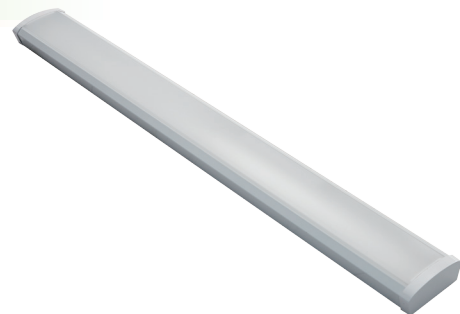
- 8% up-light and no glare
- Quick and Easy to wire and install
- Seamless connection

## Opal Wraparound Light

LED surface luminaire

The low-profile OPAL led wraparound light with metal housing, milky polycarbonate end cap and diffuser provides widespread illumination. Use in a wide variety of applications such as offices, retail, hallways, retail open areas and educational facilities.

- CCT ranges: 2700K-6500K
- Simple and elegant low-profile appearance
- Optical milky lens delivers unique beam angles and reduces glare



For more products information, see:  
[www.abovealllighting.com](http://www.abovealllighting.com)



# Control Accessories

(order separately & field installed)



**Tunable White  
Dimming Controller**  
Model: ELED2-AU-120-277



**Photo Sensor**  
Model: TAP-41U



**Switch**  
Model: PTM-365DUW (white)  
PTM-365DUG (gray)

## Notes:

1. Tunable white dimming controller need to be mounted to electrical junction boxes or panels. Please refer to the details on the ELED2 Installation Guide. It can be used for several LED fixtures, MAX. load 20A@120-277 VAC.
2. The photo sensor is optional. It is for programmable CCT controls, occupancy and daylight harvesting applications. For detailed information please refers to the TAP-41 sensor datasheet.
3. Transmission range among controller, sensor and switch: 24 m (80 ft) - commercial office spaces (typical), up to 100m (330 ft) line of sight.

\* Please visit spec sheet for more SENSOR and CONTROL information at [echoflexolutions.com](http://echoflexolutions.com)

# Applications



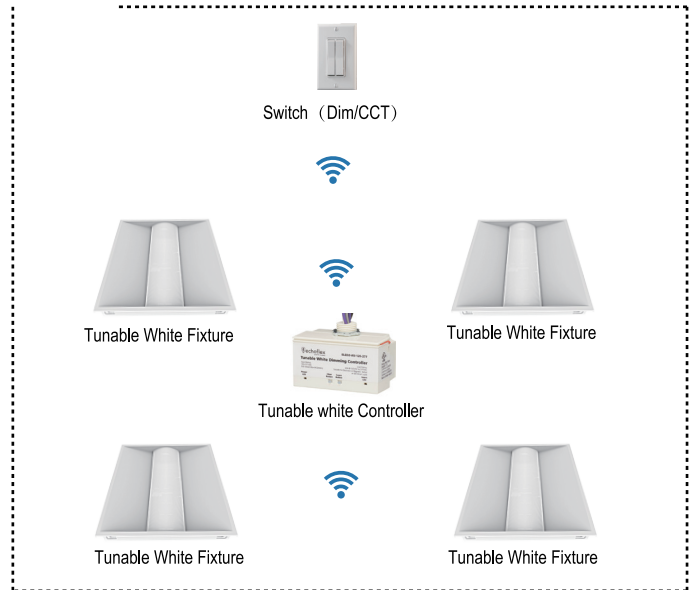
## Switch Station Operation

### •Dim-to-Warm Operation

It is operational when you have at least one switch station linked to the dimming channel and no devices linked to the tunable white channel or set point input.

### •Explicit Color Control Operation

When you have a switch station linked to the tunable-white channel, it will provide manual control over the fixtures color temperature output.



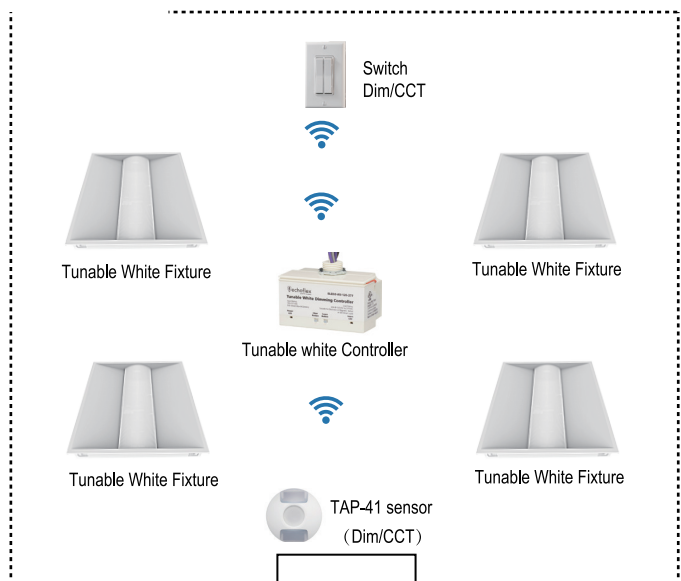
## Occupancy and Daylight Harvesting Applications

### •Automated Color Tuning Operation

This operating mode has the addition of using a color temperature sensor (like the Echoflex TAP-41U sensor) to provide feedback from the controlled space. The controller compares the sensor value to a CCT set point and modulates the color-tuning channel to drive the sensor value towards the set point.

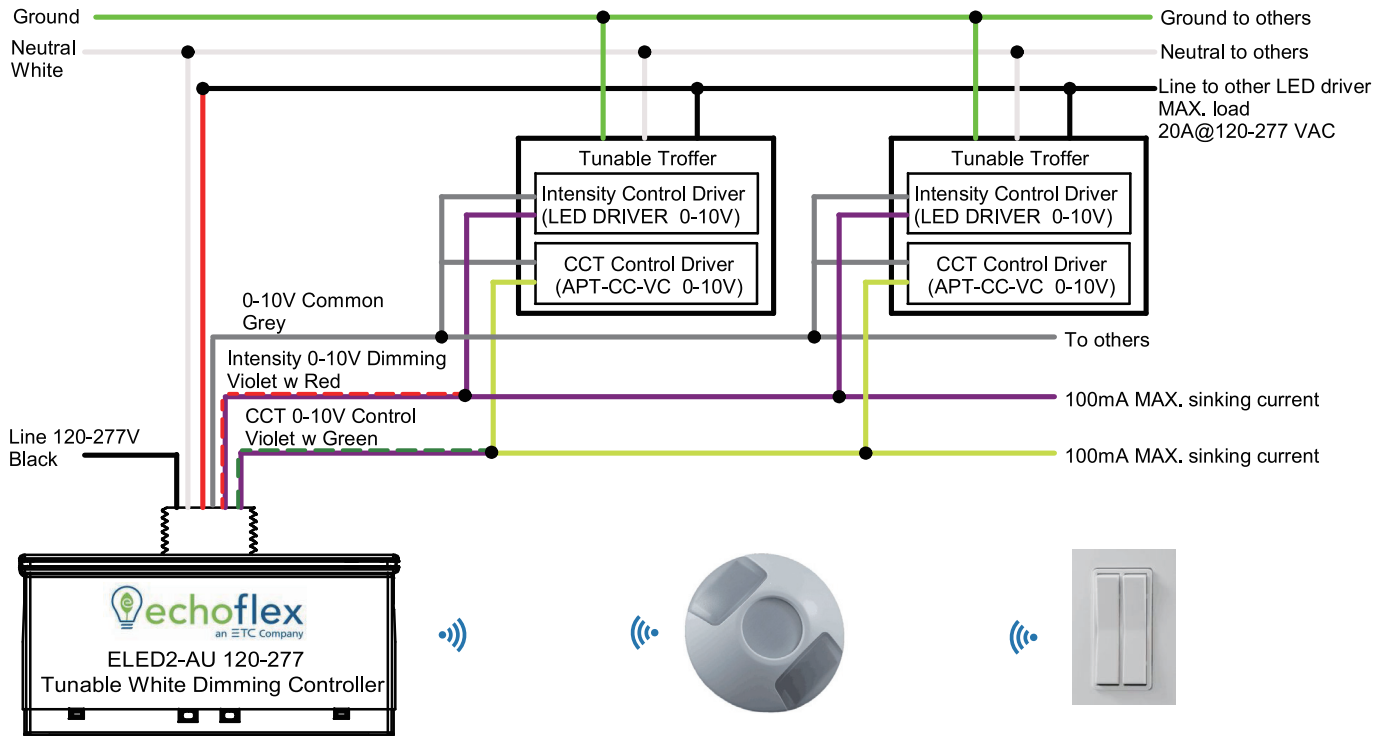
### •Characterized Color Tuning Operation

This operating mode will modulate the tunable-white channel based on the set point value. As in the automated tuning operation, a gateway command or outdoor color temperature sensor can be linked to the set point input and the output will adjust to this value based on the fixtures defined specifications. This operation does require the fixtures characterized specifications for the 0-10V channel be defined with the controllers configuration.



Notes: More details of operations and functions please refers to the ELED2-Programming Guide.

# Wiring Diagram



## Note:

1. The sensor TAP-41U and switch PTM-365 are wireless and standalone, which don't need to be wired.
2. Transmission Range among controller, sensor and switch: 24 m (80 ft) - commercial office spaces (typical), up to 100m (330 ft) line of sight.

