



JELLY JAR LED VAPOR PROOF LIGHT



PRODUCT DESCRIPTION

The Jelly Jar LED Vapor Proof Light provides an indoor/outdoor solution in applications where lighting fixture protection and durability is required. The fixture provides equivalent light output to replace the incandescent and CFL fixtures, with high-quality and long lasting illumination. The fixture is vapor tight to protect against dust and moisture. Ideal for patios, garages, storage, and industrial areas.

FEATURE

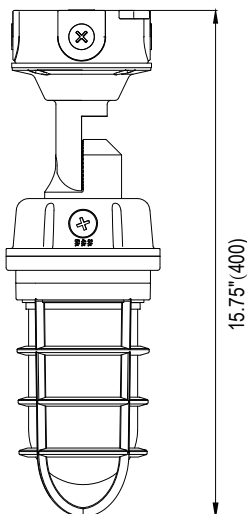
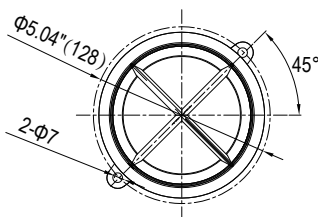
- Die-cast aluminum housing
- 3000K/4000K/5000K selectable
- Ceiling and wall mount
- Tempered glass globe and wire guard

ELECTRICAL SYSTEM

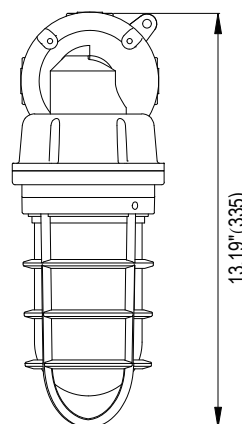
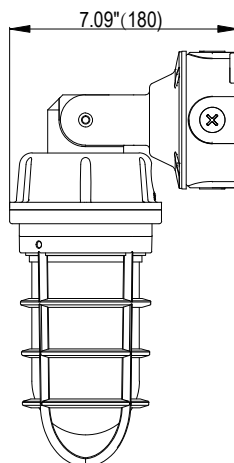
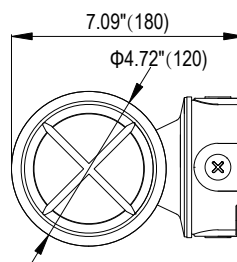
- Input Voltage: 120-277V, 50/60Hz
- Minimum ambient -40°C, maximum ambient 40°C
- Power Factor: > 0.9 at full load
- Total Harmonic Distortion: < 20% at full load

SPECIFICATION

Ceiling Mount



Wall Mount



PERFORMANCE

CRI

80+

CCT

3000K, 4000K, 5000K

Projected Lifetime

L70 - 80,000 Hours

Working Temperature

-40-104°F (-40-40°C)

Certifications

- cETLus Listed
- IP65 rated, suitable for wet location
- RoHS compliant

Ordering Information

Example: JJR20LEDSW1-CWM-GY

Series	Watts	Source Type	CCT	Voltage	- Installation	- Finish
JJR	20 -20 Watts	LED	SW- 3000K/4000K 5000K Selectable ¹	1- 120-277VAC	CWM - Adjustable Bracket for Ceiling and Wall Mount	GY - Grey

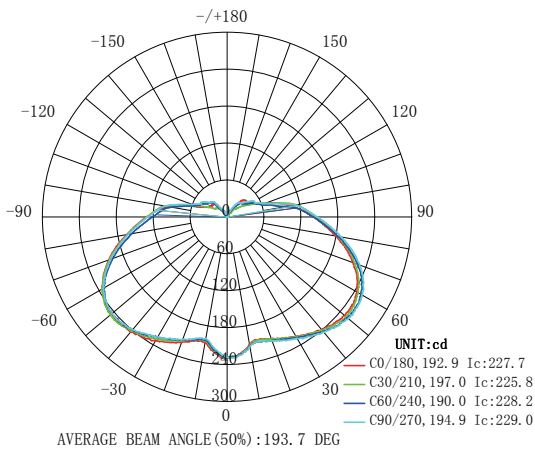
Notice:

1. 4000K is default setting.

* Grey finish is standard. Custom color is available for a premium setup fee. Consult customer service for additional information.

PHOTOMETRY

All published luminaire photometric testing performed to IESNA LM-79-08 standards by a NVLAP certified laboratory.



PERFORMANCE DATA

LUMEN OUTPUT

Lumen values are measured by third party certified laboratories performed in accordance with IESNA LM-79-08 as well as Lighting Facts listed.

Watts	Lumen Output	AC Input 120V	CCT	CRI	LPW
20W	1700	0.17A	3000K	80	85
20W	1900	0.17A	4000K	80	95
20W	1800	0.17A	5000K	80	90

Warranty

Five year limited warranty.

Note:

Specifications subject to change without notice.