



NOVA LED DOWNLIGHT



PRODUCT DESCRIPTION

The NOVA LED commercial downlights are available in 4", 6", 8" and 10" with up to 40W. The integral junction box and choice of trim feature, adds to the flexibility of this downlight. Butterfly clips make for easy-fit installation whether new construction or retrofit. The integral junction box eliminates the need for a traditional recessed housing and the complete fixture mounts directly into the ceiling. It is suitable for commercial and public places and elegantly decorates the ambience, such as shopping mall, hospital, airport, hotel lobby etc.

FEATURES

- 4", 6", 8" and 10" trim size options
- Various changable trim design
- Available in round, square, round wall wash and square wall wash trims
- Twist-lock modular design
- Integrated J-box for direct wire, eliminated recessed can
- CCT and Wattage selectable
- New construction frame kit available

ELECTRICAL SYSTEM

- Input Voltage: 120-347V, 50/60Hz
- Operating temperature range: -4-104°F (-20-40°C)
- Power Factor: > 0.9 at full load
- Total Harmonic Distortion: < 20% at full load

PERFORMANCE

CRI

80

CCT

3000K, 3500K, 4000K

Dimming

1-10V Dimming

Projected Lifetime

L70 - 100,000 Hours

Working Temperature

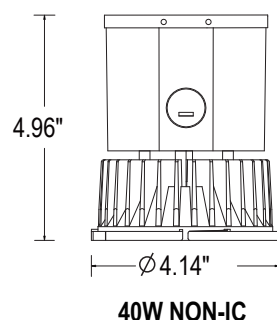
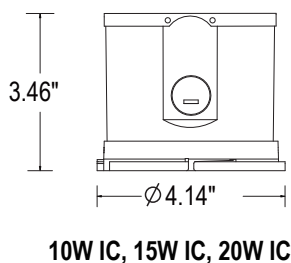
-4-104°F (-20-40°C)

Certifications

- cULus conforms to UL Std. 1598 Cert. to CSA Std. C22.2 No.250.0
- Suitable for damp locations
- RoHS compliant

DIMENSIONS

ENGINE DIMENSIONS



TRIM DIMENSIONS

Round Trims

4"

White Ring Metal Ring
Cut-hole Dimensions: 4.7"-5.2"

6"

White Ring Metal Ring
Cut-hole Dimensions: 6"-7.3"

8"

White Ring Metal Ring
Cut-hole Dimensions: 7.4"-8.9"

10"

Cut-hole Dimensions: 9.5"-10.8"

Round Wall Wash Trims

4"

Cut-hole Dimensions: 5.3"-6"

6"

Cut-hole Dimensions: 6"-7.3"

Square Trims

4"

Cut-hole Dimensions: 5.3"-6"

6"

Cut-hole Dimensions: 6"-7.3"

Square Wall Wash Trims

4"

Cut-hole Dimensions: 5.3"-6"

6"

Cut-hole Dimensions: 6"-7.3"

Ordering Information

Example: NOVA-20SPSW8

1. Series

NOVA

2. Wattage

20SP - 10W/15W/20W
Selectable

40SP - 27W/34W/40W
Selectable

* 20W and 40W are default setting.

3. CCT

SW - 3000K / 3500K / 4000K Selectable

* 3000K is default setting.

4. Voltage

8 - 120-347V

OPTIONAL ORDERING GUIDE

Trim Shape

Round Trim

White Ring

Metal Ring

Square Trim

Round Wall Wash Trim

Square Wall Wash Trim

* Different trims need to be bought separately and field installed.
More details are in the following accessory table.

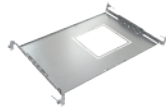
Accessories (ordered separately and field installed)

New Construction Pre-mounting Plate



NOVA-3/8-R-RIP

New Construction
Round pre-mounting plate
opening for 3" to 8"



NOVA-4/6-S-RIP

New Construction
Square pre-mounting plate
opening for 4" to 6"

Accessories (ordered separately and field installed)

Round Trim



NOVA4-RT-WH

Round Trim with White Ring for 4" NOVA

NOVA4-RT-MT

Round Trim with Metal Ring for 4" NOVA

NOVA6-RT-WH

Round Trim with White Ring for 6" NOVA

NOVA6-RT-MT

Round Trim with Metal Ring for 6" NOVA

NOVA8-RT-WH

Round Trim with White Ring for 8" NOVA

NOVA8-RT-MT

Round Trim with Metal Ring for 8" NOVA

NOVA10-RT-WH

Round Trim with White Ring for 10" NOVA

Square Trim



NOVA4-ST-WH

Square Trim with White Ring for 4" NOVA

NOVA6-ST-WH

Square Trim with White Ring for 6" NOVA

Round Trim Wall Wash



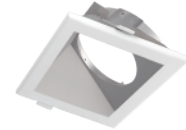
NOVA4-RWWT-WH

Round Wall Wash Trim with White Ring for 4" NOVA. Tilt 10°-20°

NOVA6-RWWT-WH

Round Wall Wash Trim with White Ring for 6" NOVA. Tilt 10°-20°

Square Trim Wall Wash



NOVA4-SWWT-WH

Square Wall Wash Trim with White Ring for 4" NOVA. Tilt 10°-20°

NOVA6-SWWT-WH

Square Wall Wash Trim with White Ring for 6" NOVA. Tilt 10°-20°

External EBU



EBU-H08170

8W Emergency Battery
Back-up for MAX.60W fixture

* Emergency battery back-up is for ambient temperatures of 32°F -95°F (0 °C -35°C).

PERFORMANCE DATA

Lumen values are measured by third party certified laboratories performed in accordance with IESNA LM-79-08 as well as Lighting Facts listed.

Item	Lumen Output			Type
	High	Medium	Low	
Maximum 20W	20w, 75lm/w	15w, 78lm/w	10w, 80lm/w	IC
Maximum 40W	40w, 80lm/w	34w, 85lm/w	27w, 90lm/w	NON-IC

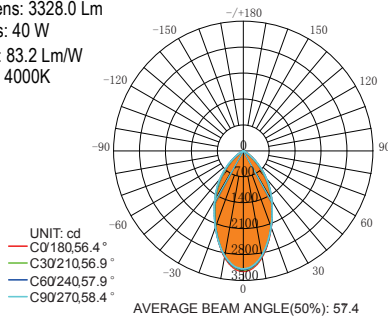
Remark: All efficacy is $\pm 5\%$ base on different CCT and Trims. Check the IES file to gain the accurate data .

PHOTOMETRY

All published luminaire photo metric testing performed to IESNA LM-79-08 standards by a NVLAP certified laboratory. IESNA LM-79-08 specifies the entire luminaire as the source resulting in a fixture efficiency of 100%.Result may vary per actual order.

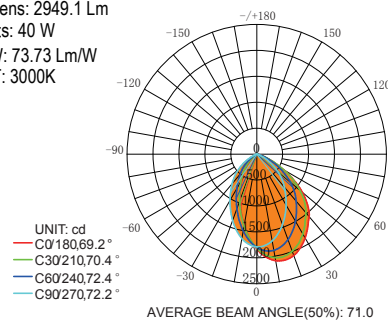
6" 40W Round Trim

Lumens: 3328.0 Lm
 Watts: 40 W
 LPW: 83.2 Lm/W
 CCT: 4000K



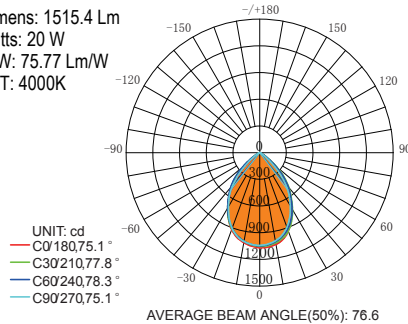
6" 40W Round Wall Wash

Lumens: 2949.1 Lm
 Watts: 40 W
 LPW: 73.73 Lm/W
 CCT: 3000K



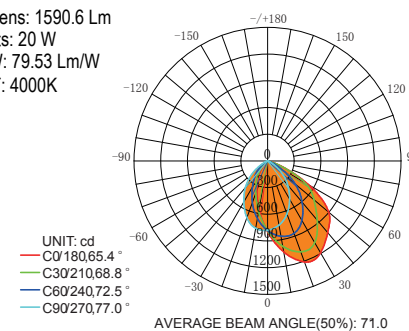
6" 20W Square Trim

Lumens: 1515.4 Lm
 Watts: 20 W
 LPW: 75.77 Lm/W
 CCT: 4000K



6" 20W Square Wall Wash

Lumens: 1590.6 Lm
 Watts: 20 W
 LPW: 79.53 Lm/W
 CCT: 4000K



Warranty

Five year limited warranty. Full warranty terms located at www.abovealllighting.com/warrantystatements.

Specifications subject to change without notice.