

SMT LED AREA LIGHT



PRODUCT DESCRIPTION

The SMT series distills the benefits of the latest in LED technology into a high performance, high efficacy, long-life luminaire. The outstanding photometric performance results in sites with excellent uniformity, greater pole spacing and lower power density. It is a better alternative for traditional street and area lighting with quick payback and improved performance. It is widely used for Roadway, parking lots, walkways and general area spaces.

FEATURE

- Low profile design, minimizing wind load.
- Heavy duty construction with die casting aluminum housing.
- Polycarbonate with tempered glass lens doesn't fade and discolor.
- Versatile mounting options for square pole, round pole and wall mounting.
- Option of controls for maximum energy savings.
- Full distributions to cover various applications.
- Integral 10kV surge suppression protection.

ELECTRICAL SYSTEM

- Input Voltage: 100-277V, 347-480V, 50/60Hz
- Power Factor : > 0.9 at 120V
- Total Harmonic Distortion: < 20% at 120V
- Integral 10kV surge suppression protection standard.
- Minimum Ambient -40°F, maximum ambient 122°F

SPECIFICATION

Approximate Net Weight	10 lbs
Dimension W/O Mounting Brackets (L*W*H):	13.20"*10.85"*3.20"
Effective Project Area (EPA)	-with Arm, EPA = 0.53 ft ²
	-with Slipfitter, EPA = 0.55 ft ²
	-with Trunnion, EPA = 0.47 ft ²
	-with Wall Bracket, EPA=0.324ft ²

PERFORMANCE

CRI

70+

CCT

3000K、 4000K、 5000K

Dimming

0-10V Dimming Standard
Dimming wires are pre-installed inside the fixture. If dimming wires need to be accessed, please contact Customer Service.

Projected Lifetime

L70 - 127,000 Hours

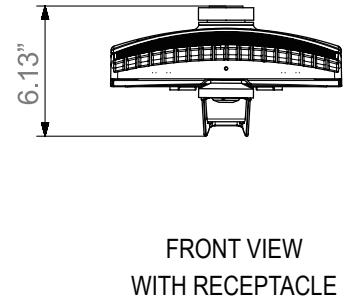
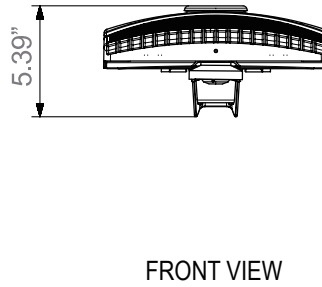
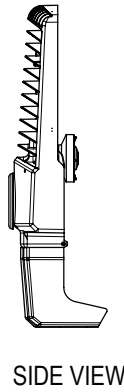
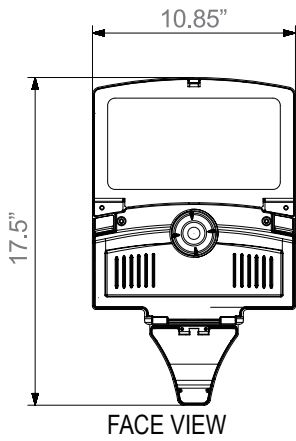
Working Temperature

-40-122°F (-40-50°C)

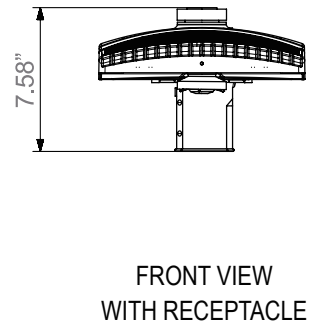
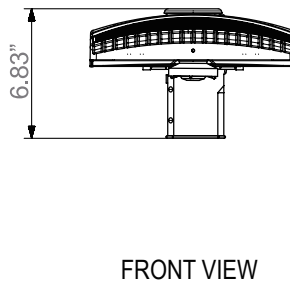
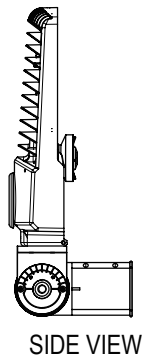
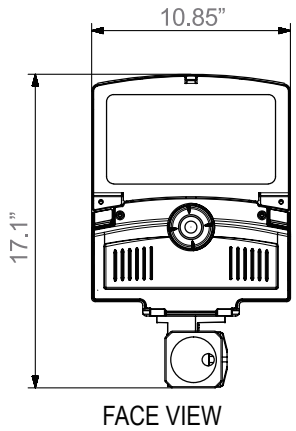
Certifications

- ETL listed
- IP66 rated
- DLC Premium qualified
- RoHS compliant

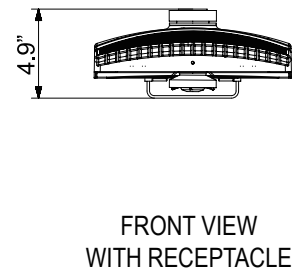
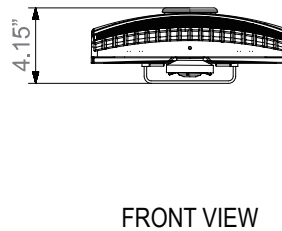
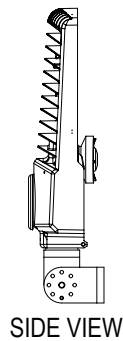
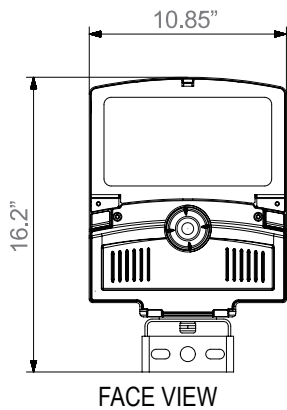
Arm Mount



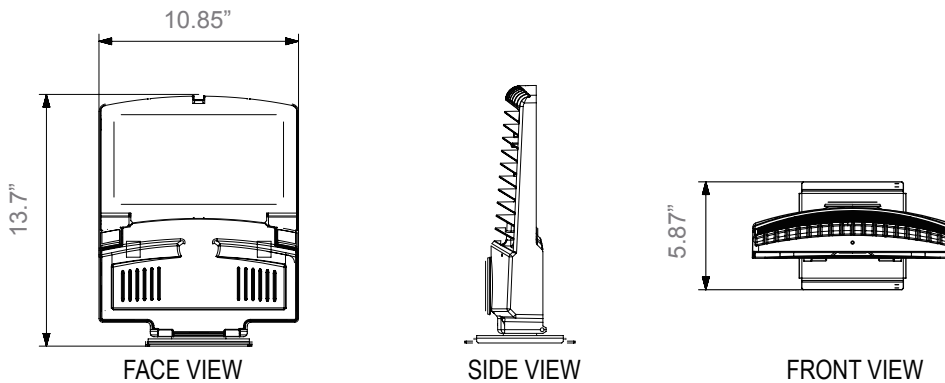
Slipfitter Mount



Trunnion Mount



Wall Mount



Ordering Information

Example: SMT40401-7P-SAR-T2

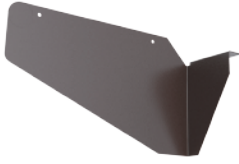
SMT	Watts	CCT	Voltage	Control	Installation	Distribution	Finish
SMT	40 - 40W	30 - 3000K	1 - 120-277V	Blank - None	SAR - Square Pole Arm ⁶	T2 - Type II	Blank - Dark Bronze * Custom colours are available for additional charge.
		40 - 4000K	2 - 347V ¹	MS-L3B - Wattstopper Sensor with Black L3 Lens ³		T3 - Type III	
		50 - 5000K		PC - Photoelectric Control	TR - Trunnion	T4 - Type IV	
	60 - 60W		1 - 120-277V	7P - 7 Pin Receptacle ⁴	SF - Slip Fitter ⁵	T5 - Type V	
	80 - 75W		2 - 347V ¹		WM - Wall Mount		
	85 - 85W		3 - 480V ²				
			6 - 347/480V				

Notes:

- 347V is only used with photoelectric control .
- 480V is only used with photoelectric control.
- The standard MS L3 lens is suitable for the mounting height of 20ft (6m) Max. If higher than 20ft (6m), please contact Customer Service to choose L7 lens. Wattstopper sensor is NOT available for 347/480V.
- Sensor is by others. Shorting cap included.
- The slip fitter fits a 2 3/8" O.D. tenon or pole.
- If for round pole mount, a separate round pole adapter need to be bought. Please check the following accessory table for details.

* Standard Finish is Dark Bronze. Custom colours are available for additional charge.

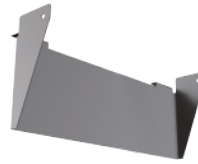
Accessories (Ordered separately/field install)



90405
SMT-RSS
Right side shield for SMT



90406
SMT-LSS
Left side shield for SMT



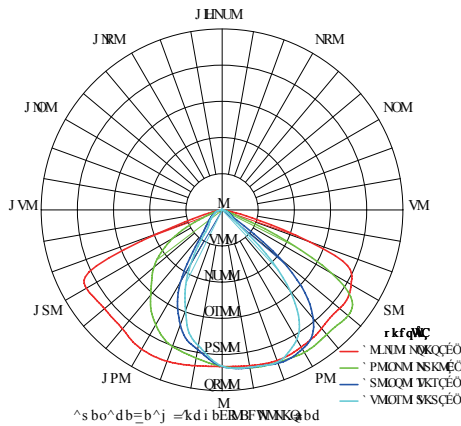
90786
SMT-BSS
Back side shield for SMT



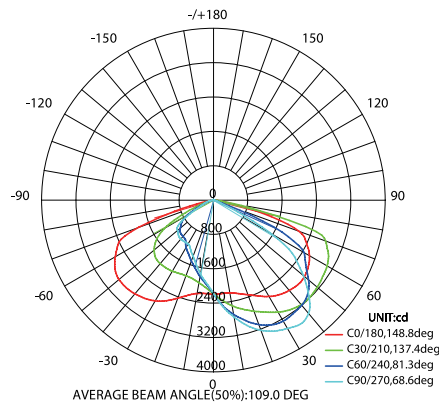
90204
SMT-RPA
Round pole adapter for SMT

PHOTOMETRY

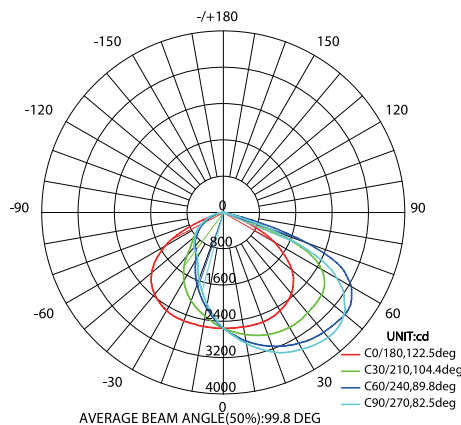
All published luminaire photometric testing performed to IESNA LM-79-08 standards by a NVLAP certified laboratory.



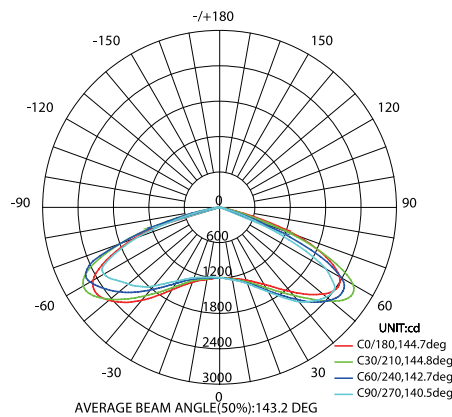
Type II



Type III



Type IV



Type V

PERFORMANCE DATA

LUMEN OUTPUT

Lumen values are measured by goniophotometers system

Nominal Watts	Measured Watts	Lumen Output	AC Input 120V	CRI	Dist. Type	CCT	LPW
40W	42W	5155lm	0.35A	>70	Tyep III	4000K	123
60W	62W	7200lm	0.52A	>70	Tyep III	4000K	116
80W	75W	8862lm	0.62A	>70	Tyep III	4000K	118
85W	85W	10285lm	0.71A	>70	Tyep III	4000K	121

Lumen Ambient Temperature (LAT) Multipliers

Use these factors to determine relative lumen output for average ambient temperature from -40-122°F (-40-50°C).

Ambient		Multiplier
Celsius	Fahrenheit	
0	32	1.02
10	50	1.01
20	68	1.00
25	77	1.00
30	86	1.00
40	104	0.99

BUG RATING

Performed to IESNA LM-79-08 standards by a NVLAP accredited laboratory

Model	BUG Rating
SMT40401-T2	B2-U0-G1
SMT40401-T3	B1-U0-G1
SMT40401-T4	B1-U0-G1
SMT40401-T5	B2-U0-G1
SMT60401-T2	B3-U0-G1
SMT60401-T3	B2-U0-G1
SMT60401-T4	B2-U0-G1
SMT60401-T5	B3-U0-G1
SMT80401-T2	B3-U0-G2
SMT80401-T3	B2-U0-G2
SMT80401-T4	B2-U0-G1
SMT80401-T5	B3-U0-G1
SMT85301-T2	B3-U0-G2
SMT85301-T3	B2-U0-G2
SMT85301-T4	B2-U0-G2
SMT85301-T5	B3-U0-G3

SMT LED RATED LIFE

Performed to ISTMT standards

Ambient Temp in	73°F	104°F	113°F	122°F
85W Rated Life	100,000H	100,000H	90,000H	65,000H

System Wattage	Max THD (%)	Power Factor(at 120Vac)	Replaces/ Equiv.(HPS)
40W	20	>0.9	70-100W
60W	20	>0.9	100-150W
75W	20	>0.9	150-200W
85W	20	>0.9	250-400W



SMT with Arm Mount



SMT with Trunnion Mount



SMT with Slipfitter Mount



SMT with Wall Mount



SMT with right side shield



SMT with left side shield

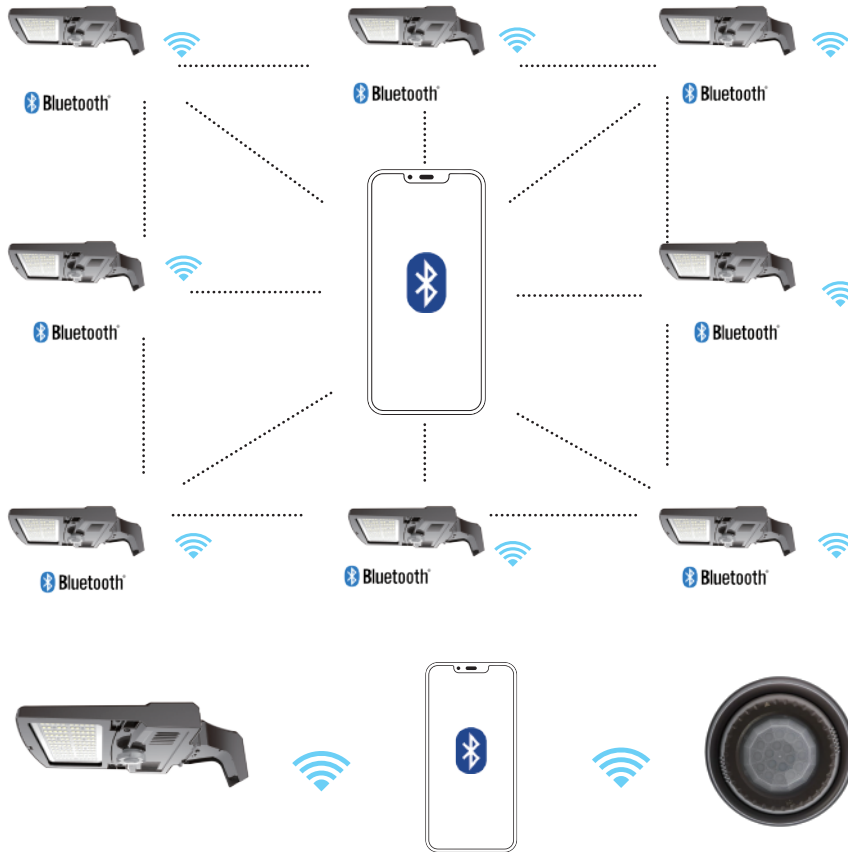


SMT with back side shield

BLUETOOTH PIR MOTION SENSOR



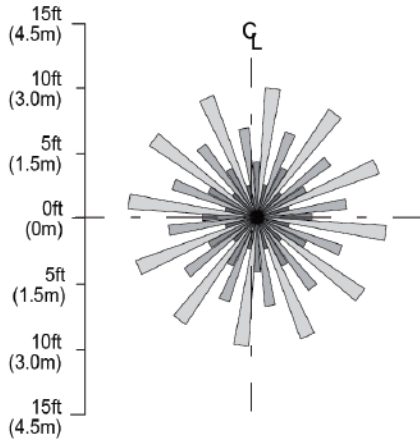
Bluetooth Mesh Control



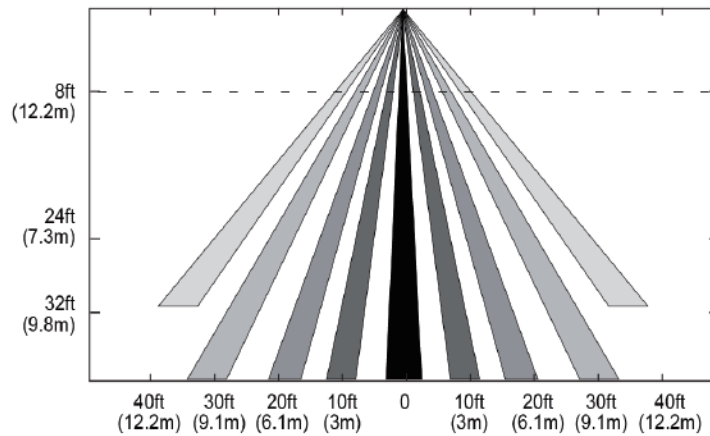
Model No.	Description	Input Voltage	Output
BMS-M100-PIR-DC1-BLE-SR-Z10-BZ	Fixture Controller with 0-10V Dimming, PIR Motion Sensor, Bluetooth Mesh in BlueMesh®, standard Dark Brown Color	12-24VDC	Control High 0-10V Dimming
BMS-M110-PIR-DC1-BLE-SR-Z10-BZ	Fixture Controller with 0-10V Dimming, PIR Motion Sensor, Light Sensing, Bluetooth Mesh in BlueMesh®, standard Dark Brown Color	12-24VDC	Control High 0-10V Dimming
BMS-M100-PIR-DC1-BLE-SR-Z10-WH	Fixture Controller with 0-10V Dimming, PIR Motion Sensor, Bluetooth Mesh in BlueMesh®, White Color, Silvair technology partner	12-24VDC	Control High 0-10V Dimming
BMS-M110-PIR-DC1-BLE-SR-Z10-WH	Fixture Controller with 0-10V Dimming, PIR Motion Sensor, Light Sensing, Bluetooth Mesh in BlueMesh®, White Color	12-24VDC	Control High 0-10V Dimming
BMS-M100-PIR-DC1-BLE-SR-Z10-BK	Fixture Controller with 0-10V Dimming, PIR Motion Sensor, Bluetooth Mesh in BlueMesh®, Black Color	12-24VDC	Control High 0-10V Dimming
BMS-M110-PIR-DC1-BLE-SR-Z10-BK	Fixture Controller with 0-10V Dimming, Light Sensing, Bluetooth Mesh in BlueMesh®, Black Color	12-24VDC	Control High 0-10V Dimming
LS01-LB-F3-XX	360° Low Bay Lens, maximum coverage 60ft diameter at 30ft and 40ft height –replace –XX with –BN for Brown finish, -BK for Black finish or –WT for Brown finish		
LS01-HB-F3-XX	360° High Bay Lens, maximum coverage 80ft diameter at 30ft-40ft height –replace –XX with –BN for Brown finish, -BK for Black finish or –WT for Brown finish		

Detection Area

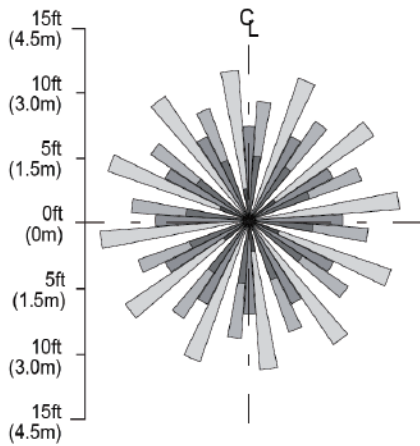
High Bay Lens - Top View at 8 ft(2.4m)



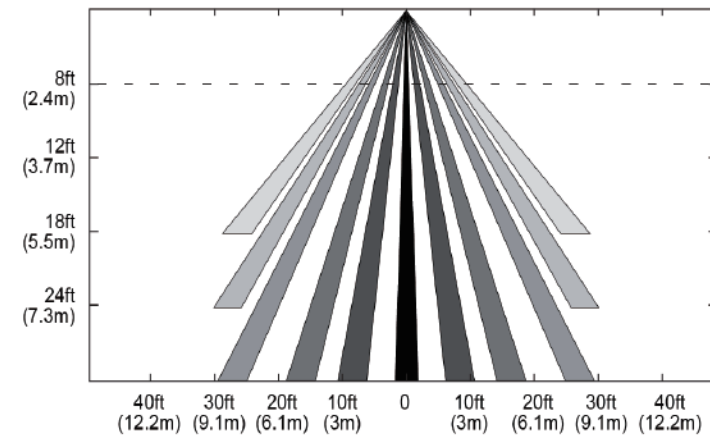
Side View



Low Bay Lens - Top View at 8 ft(2.4m)



Side View



Ref#: 20240914

Warranty

Five year limited warranty. Full warranty terms located at www.abovealllighting.com/warrantystatements/

Note:

Specifications subject to change without notice.