



The Eunique LED Bollard is an innovative bollard light that enhances the aesthetics of any space. Featuring standard photocontrol, it is available in 20" and 43" pole heights. This bollard is ideal for a wide range of applications, including walkways, entrances, promenades, plazas, bridges, and landscaped areas.

## TECHNICAL DATA

Wattage	15W, 25W
CRI	70
CCT	3000K, 4000K, 5000K
Driver	0-10V Dimming
Input Voltage	120-277V, 50/60Hz
Operating Temp.	-22°F to 104°F (-30°C to 40°C)
Certifications	cETL listed
	Suitable for wet location
	RoHS compliant
Power Factor	>0.9 at 120Vac
Harmonic Distortion	<20% at full load
Projected Lifetime	L70 - 100,000 Hours
IP Rating	IP66
IK Rating	IK10



## FEATURES

- **Durable Design:** IP66-rated and IK10-rated for long-term reliability.
- **Versatile Application:** Ideal for a wide range of exterior spaces.
- **Optional Add-Ons:** Photocontrol and emergency battery back-up available.

## SPECIFICATION

### Dimension

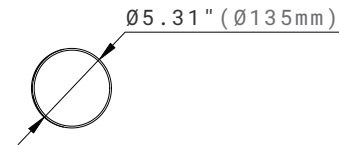
#### Side View

43H



#### Top View

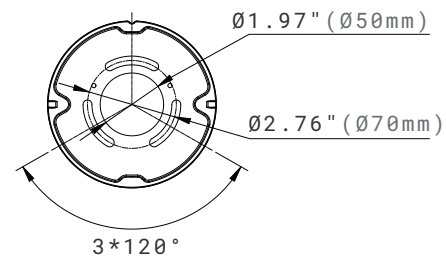
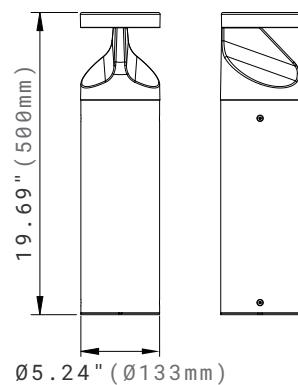
43H & 20H



#### Base Plate

43H & 20H

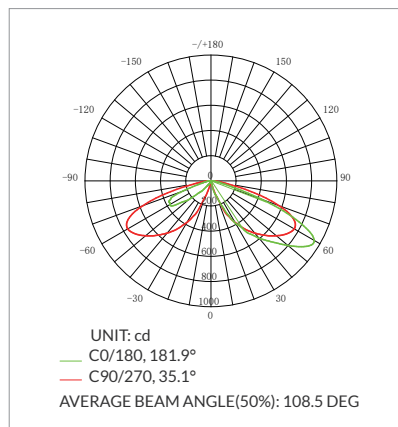
20H



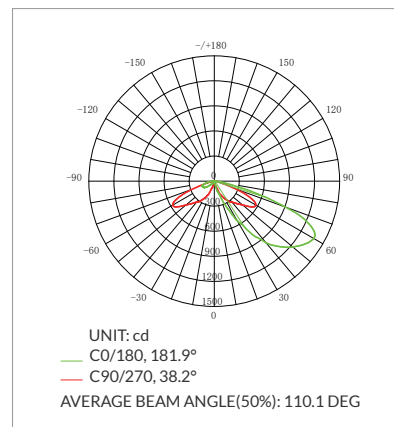
## PHOTOMETRY

All published luminaire photometric testing performed to IESNA LM-79-08 standards by a NVLAP certified laboratory. IESNA LM-79-08 specifies the entire luminaire as the source resulting in a fixture efficiency of 100%. Result may vary per actual order.

### Type III



### Type IV



## ORDERING INFORMATION

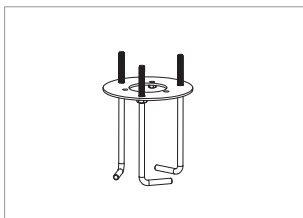
EXAMPLE: EBD-43H-25401-PC-III-BK

EBD							
Series	Pole Height	Wattage	CCT	Voltage	Control	Distribution	Finish
EBD Eunike Bollard	20H 20" Height	15 15W	30 3000K	1 120-277V	PC <sup>1</sup> Photocontrol	III Type III	BK <sup>3</sup> Black RAL9017
	43H 43" Height	25 25W	40 4000K		EBU <sup>2</sup> Emergency Battery Back-up	IV Type IV	
			50 5000K				

### NOTE:

1. Photocontrol is the standard lighting control.
2. Emergency battery backup is only available for the 43" high pole. It operates within ambient temperatures of 32°F to 95°F (0°C to 35°C). The emergency battery back-up (EBU) provides 4W power (420 lumens) and ensures a minimum runtime of 90 minutes.
3. The standard color is black finish; Custom finish colors are available at an additional charge. Please contact Customer Service for premium options.

## ACCESSORIES (ORDERED SEPARATELY)



**91121**  
**ABMK04**  
 Anchor Bolts Mounting Kits.

## PERFORMANCE DATA

Lumen values are measured by third party certified laboratories performed in accordance with IESNA LM-79-08 as well as Lighting Facts listed.

Wattage	Tested Wattage	Lumen Output	AC Input 120V	CRI	CCT	LPW
25W	24W	2540lm	0.2A	70	4000K	107
15W	13W	1500lm	0.1A	70	4000K	118

### Lumen Multiplier

CCT	Multiplier
3000K	0.9
4000K	1
5000K	0.95

## BUG RATING TABLE

Performed to IESNA LM-79-08 standards by a NVLAP accredited laboratory.

Model	BUG Rating
EBD-25401-III	B1-U0-G1
EBD-25401-IV	B1-U0-G1

## WARRANTY

5 years limited warranty.

Specifications subject to change without notice.