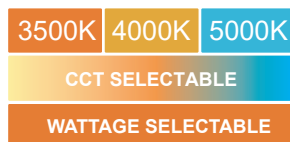




SELECTABLE BACK-LIT LED FLAT PANEL



PRODUCT DESCRIPTION

The selectable flat panel features back-lit design. Comes in 2x2, 2x4 and 1x4 configurations. Ideal for standard T-bar and narrow grid drop ceiling to replace the fluorescent troffer in offices, supermarkets, schools and other indoor applications

FEATURE

- Wattage and CCT selectable
- 120-347V available
- No LGP, never yellowing
- High efficacy up to 125lm/w, meet DLC 5.1 premium version

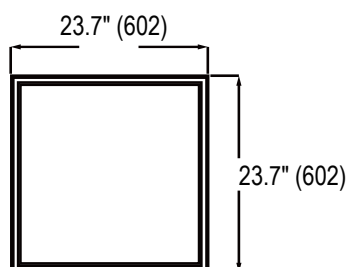
ELECTRICAL SYSTEM

- Input voltage: 120-347V, 50/60Hz
- Power Factor: >0.9
- Total Harmonic Distortion: <20% at full load
- Working Temperature: -20~40°C (-4~104°F)

SPECIFICATION

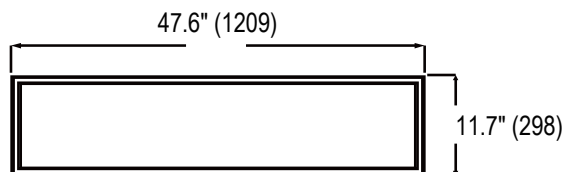
2X2

Length: 23.7"
 Width: 23.7"
 Depth: 1.5"
 Max. Weight: 4.40 lbs



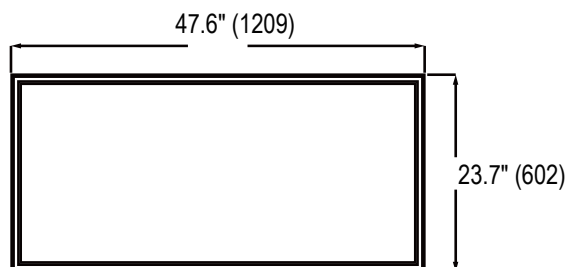
1X4

Length: 47.6"
 Width: 11.7"
 Depth: 1.5"
 Max. Weight: 5 lbs



2X4

Length: 47.6"
 Width: 23.7"
 Depth: 1.5"
 Max. Weight: 9 lbs



PERFORMANCE

CRI

80

CCT

3500K、4000K、5000K

Dimming

0-10V Dimming Standard

Projected Lifetime

L70 -100,000 Hours

Working Temperature

-4~104°F (-20~40°C)

Certifications

- cULus conforms to UL Std. 1598Cert. to CSA Std. C22.2 No.250.0
- Suitable for dry locations
- Type IC Rated, suitable for insulated ceilings
- Tested in accordance with ISO 14644-1 Suitable for ISO Class 1 to 5.
- RoHS compliant

Ordering Information

Example: SBFLP24D-SP2-SW8-P

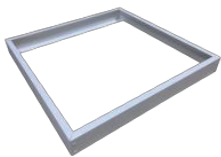
Name	Dimension	Dimmable	- Watts	- CCT	Voltage	- LPW	- Control
SBFLP	22 - 2x2'	D- 1-10V dimming	SP1 - Selectable Power 25W/30W/40W¹	SW - Selectable White 3500K/4000K/5000K³	8- 120-347V	P- Premium	Blank - None
	14 - 1x4'		SP1 - Selectable Power 25W/30W/40W¹				EBU - Emergency Back-up⁴
	24 - 2x4'		SP2 - Selectable Power 30W/40W/50W²				

Notice:

- 40W is default setting, If need other wattage, please contact Customer Service in advance to change the setting in factory or change the setting in the field
- 50W is default setting, If need other wattage, please contact Customer Service in advance to change the setting in factory or change the setting in the field
- 3500K is default setting. If need other CCT please contact Customer Service in advance to change the setting in factory or change the setting in the field.
- Emergency back-up can only be used @120-277V.

* White finish is standard. Additional charge will apply for other colors.

Accessories (Ordered separately)



90106K
2*2 Surface Mount Kit
90122K
1*4 Surface Mount Kit
90123K
2*4 Surface Mount Kit



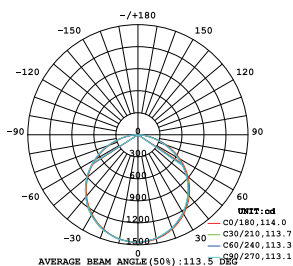
90139K
1*4 Flange Kit
90140K
2*4 Flange Kit
90141K
2*2 Flange Kit



90579
FLP-SK
Suspension Kit for 2*2, 1*4 and 2*4 FLP (a set)

PHOTOMETRY

All published luminaire photo metric testing performed to IESNA LM-79-08 standards by a NVLAP certified laboratory.



PERFORMANCE DATA

LUMEN OUTPUT

Lumen values are measured by third party certified laboratories performed in accordance with IESNA LM-79-08 as well as Lighting Facts listed.

Premium

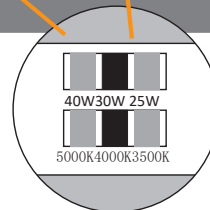
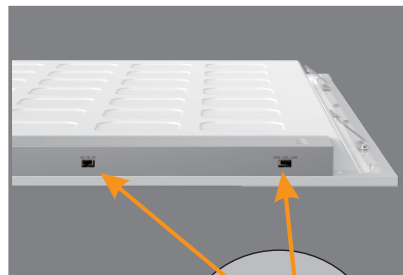
Watts	Size	Nominal Lumen	CCT	CRI	LPW
25W	2x2/1x4	3125lm	4000K	>80	125
30W	2x2/1x4/2x4	3750lm	4000K	>80	125
40W	2x2/1x4/2x4	5000lm	4000K	>80	125
50W	2x4	6250lm	4000K	>80	125

Lumen Ambient Temperature (LAT) Multipliers

Use these factors to determine relative lumen output for average ambient temperature from -4-104°F (-20-40°C).

Ambient		Multiplier
Celsius	Fahrenheit	
0	32	1.02
10	50	1.01
20	68	1.00
25	77	1.00
30	86	1.00
40	104	0.99

Note: Actual performance may differ as a result of end-user environment and application. All values are design or typical values, measured under laboratory conditions at 25 °C. Specifications subject to change without notice



Warranty

Five year limited warranty. Full warranty terms located at www.abovealllighting.com/warrantystatements

Note:

Specifications subject to change without notice.