



The SSTRW LED Slim Strip features a slim, low-profile and traditional design with diffused lens. Comes in 2ft, 4ft and 8ft. Field-adjustable light output and CCT. Buckle design, convenient disassembly and assembly. It can be widely used in warehouse, office, garage, display shop and other commercial applications.

TECHNICAL DATA

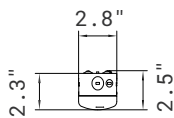
Length	2ft, 4ft, 8ft
Wattage	Selectable Power 15W/20W/25W
	Selectable Power 25W/30W/40W
	Selectable Power 55W/60W/65W
CRI	80
CCT	Selectable 3500K/4000K/5000K
Driver	0-10V Dimming
Input Voltage	120-277V, 50/60Hz
Operating Temp.	-4°F to 104°F (-20°C to 40°C)
Certifications	cULus conforms to UL Std.
	1598Cert. to CSA Std. C22.2
	No.250.0
	Suitable for damp locations
	RoHs compliant
Power Factor	>0.86 at full load
Harmonic Distortion	<20% at full load
Projected Lifetime	L70-100,000 Hours

FEATURES

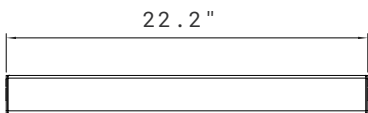
- CCT selectable (3500K, 4000K, 5000K in one).
- Wattage selectable.
- Emergency battery back up optional.
- Microwave motion sensor available.
- Buckle design, convenient disassembly and assembly.

SPECIFICATION

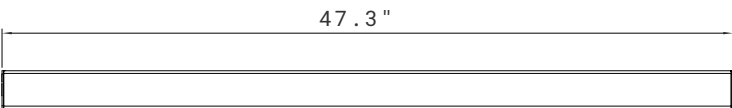
Side View



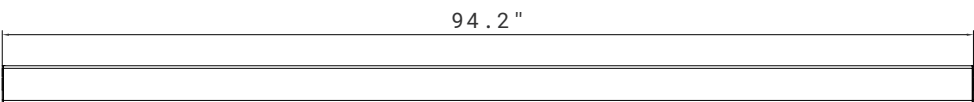
2ft



4ft



8ft



EXAMPLE: SSTRW-12D-40SP-SW1

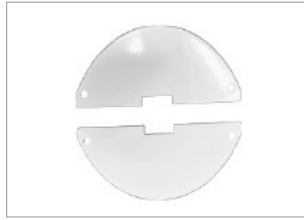
NOTE:

1. Default setting: 20W for 2ft, 30W for 4ft, 60W for 8ft.
2. 4000K is default setting.
3. White finish is standard. Custom color is available for a premium setup fee. Consult customer service for additional information

ACCESSORIES STANDARD (PACKED AND SHIPPED TOGETHER WITH FIXTURE)



1.2M Aircraft Cable



J-Box Cover



V-Hook

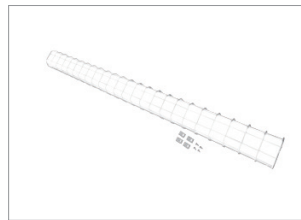
ACCESSORIES (ORDERED SEPARATELY)



Surface Mount Kit



Linkable Kit



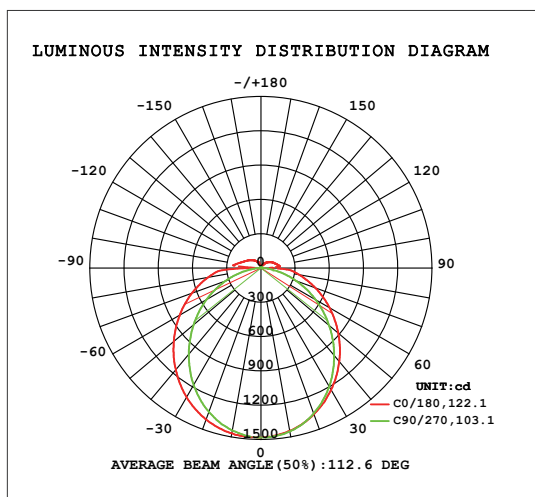
Wire Guard



RC-100
Remote control for sensor

PHOTOMETRY

All published luminaire photometric testing performed to IESNA LM-79-08 standards by a NVLAP certified laboratory. IESNA LM-79-08 specifies the entire luminaire as the source resulting in a fixture efficiency of 100%. Results may vary per actual order.



PERFORMANCE DATA

Lumen values are measured by third party certified laboratories performed in accordance with IESNA LM-79-08 as well as Lighting Facts listed.

Wattage	Lumen Output	Size	CRI	AC Input 120V	CCT	LPW
15W	2280lm	2FT	80	0.12A	4000K	152
20W	3000lm	2FT	80	0.17A	4000K	150
25W	3700lm	2FT	80	0.21A	4000K	148
25W	3800lm	4FT	80	0.21A	4000K	152
30W	4600lm	4FT	80	0.25A	4000K	153
40W	6100lm	4FT	80	0.33A	4000K	152
55W	8500lm	8FT	80	0.46A	4000K	154
60W	9000lm	8FT	80	0.50A	4000K	150
65W	9600lm	8FT	80	0.54A	4000K	147



Buckle Design, Convenient Disassembly and Assembly



CCT and Wattage Selectable

WARRANTY

5 years limited warranty.
Specifications subject to change without notice.