

## LED CENTER BASKET TROFFER



### PRODUCT DESCRIPTION

The LED Center Basket Troffer is designed to replace the traditional 2x2 and 2x4 fluorescent troffer. It is suitable for office, super market, and hotel interior decoration. Modern design with high efficiency, high color rendering index and long life span.

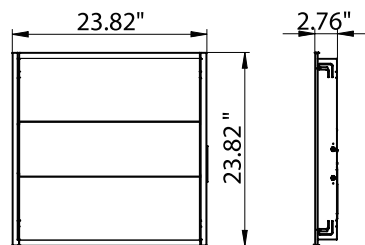
### ELECTRICAL SYSTEM

- Input Voltage: 120-277V
- 50/60Hz
- 1-10V Dimmable
- Minimum Ambient -4°F, maximum 104°F
- Power Factor: > 0.98 at 120V
- Total Harmonic Distortion: < 20% at 120V

### SPECIFICATION

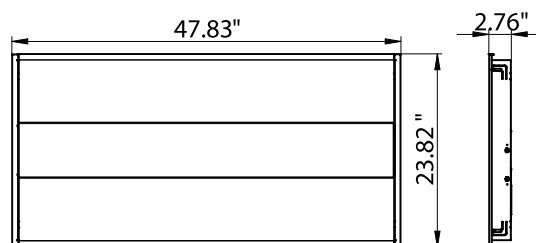
#### 2x2

Max. Weight: 8.66lbs



#### 2x4

Max. Weight: 14.04lbs



### PERFORMANCE

#### CRI

80

#### CCT

3500K, 4000K

#### Dimming

1-10V Dimming Standard

#### Projected Lifetime

L70 - 106,000 Hours

#### Working Temperature

-4-104°F (-20-40°C)

#### Certifications

- cETL listed
- Suitable for damp locations
- DLC premium
- RoHS compliant

## Ordering Information

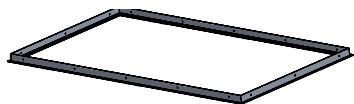
Example: TR22D35LED35-SP

Center Basket Troffer	Size	Dimmable	Watts	LED	CCT	Series	Control
TR	22-2x2 FT	D - 1-10V Dimmable	25-25 Watts	LED	35 - 3500K	SP-SP series	Blank-None
	35-35 Watts		40 - 4000K		EBU-Emergency Battery Backup <sup>1</sup>		
	24-2x4 FT		25-25 Watts		35-35 Watts		45-45 Watts

**Notice:**

1. Emergency battery backup working temperature is 32-104°F. The emergency test button is pre-installed on fixture. If need a remote test switch please contact factory. The EBU is Title 20 compliant.
2. Standard Finish is White.
3. Special Order as other finish color - Ask Customer Service for Details.

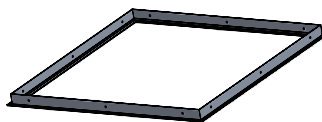
### Accessories (Ordered separately)



90140

## 2\*4 Flange Kit

## 2\*4 Recessed Mount Kit



90141

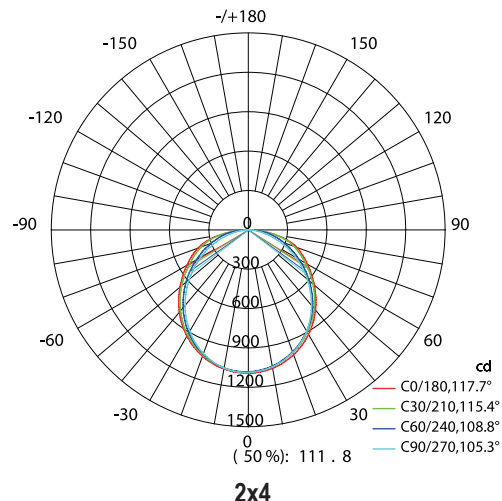
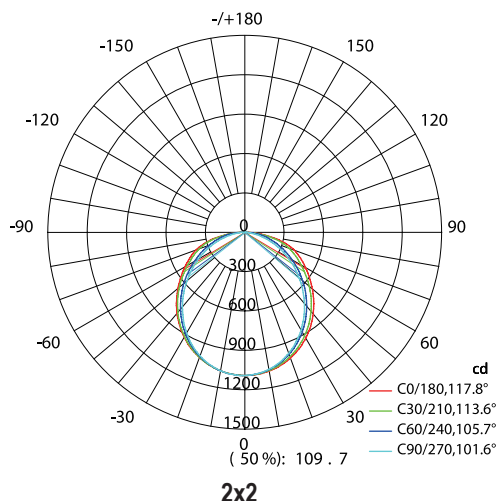
## 2\*2 Flange Kit

## 2\*2 Recessed Mount Kit

**Note:** The height of our TR fixture is 2.76". Customer need to make sure their ceiling height is high enough.

## PHOTOMETRY

All published luminaire photometric testing performed to IESNA LM-79-08 standards by a NVLAP certified laboratory.



## PERFORMANCE DATA

### LUMEN OUTPUT

Lumen values are measured by third party certified laboratories performed in accordance with IESNA LM-79-08 as well as Lighting Facts listed.

Watts	Lumen Output	Size	Measured Watts	CRI	CCT	LPW
25W	3225	2X2	25W	>80	5000K	129
35W	4250	2X2	34W	>80	3500K	125
25W	3225	2X4	25W	>80	5000K	129
35W	4250	2X4	34W	>80	3500K	125
45W	5418	2X4	43W	>80	3500K	126

## Warranty

Five year limited warranty. Full warranty terms located at [www.abovealllighting.com/warrantystatements](http://www.abovealllighting.com/warrantystatements)

Specifications subject to change without notice.