



The Selectable Flat Panel Features Edge-lit and PMMA light guide plate design, slim and low profile enables superior uniformity. Comes in 2ftx2ft, 2ftx4ft and 1ftx4ft configurations. Ideal for standard T-bar and narrow grid drop ceiling to replace the fluorescent troffer in offices, supermarkets, schools and other indoor applications.

## TECHNICAL DATA

### Wattage

2ftx2ft	Selectable 25W/30W/40W
1ftx4ft	Selectable 25W/30W/40W
2ftx4ft	Selectable 30W/40W/50W
CCT	Selectable 3500K/4000K/5000K
Driver	0-10V Dimming is standard
CRI	80
Input Voltage	120-277V, 120-347V, 50/60Hz
Projected Lifetime	L70-100,000 Hours
Operating Temp.	-4°F to 104°F (-20°C to 40°C)
Certifications	cULus conforms to UL Std. 1598Cert. to CSA Std. C22.2 No.250.0 RoHS compliant Suitable for dry locations Type IC Rated, suitable for insulated ceilings
Power Factor	>0.9
Harmonic Distortion	<20% at full load

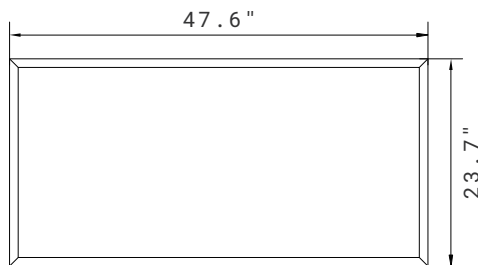
## FEATURES

- Wattage and CCT selectable.
- 120-347V available.
- Low-profile and edge-lit design.
- PMMA LGP, never get yellowing.

## DIMENSION

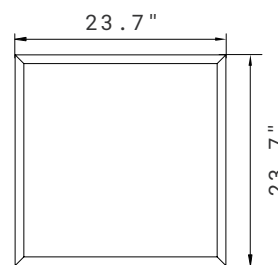
### 2'X4'

Length: 47.6"  
Width: 23.7"  
Depth without driver: 0.4"  
Depth with driver: 1.75"  
Max. Weight: 9.04lbs



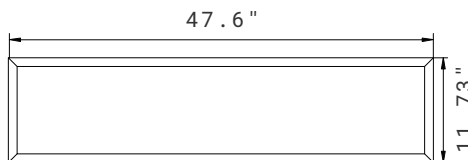
### 2'X2'

Length: 23.7"  
Width: 23.7"  
Depth without driver: 0.4"  
Depth with driver: 1.75"  
Max. Weight: 4.4lbs



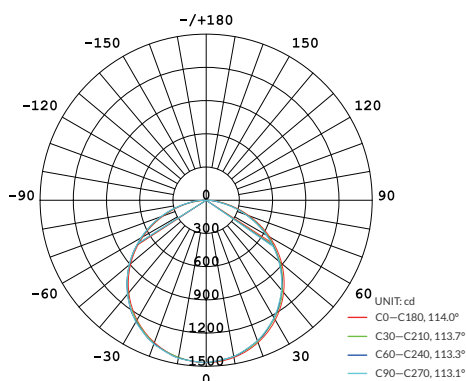
### 1'X4'

Length: 47.6"  
Width: 11.73"  
Depth without driver: 0.4"  
Depth with driver: 1.75"  
Max. Weight: 5.07lbs



## PHOTOMETRY

All published luminaire photometric testing performed to IESNA LM-79-08 standards by a NVLAP certified laboratory. IESNA LM-79-08 specifies the entire luminaire as the source resulting in a fixture efficiency of 100%. Results may vary per actual order.



AVERAGE BEAM ANGLE(50%): 113.5 DEG

## ORDERING INFORMATION

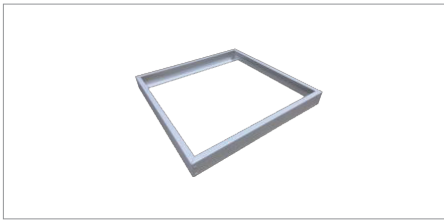
EXAMPLE: SEFLP22D-SP1-SW8

SEFLP						
Series	Size	Dimmable	Wattage	CCT	Voltage	Control
SEFLP	22 2'x2'	D 0-10V Driver	SP1 Selectable 25W/30W/40W <sup>1</sup>	SW Selectable White 3500K <sup>3</sup> /4000K /5000K	1 120-277V  8 120-347V	BLANK None  EBU Emergency Battery Back-up <sup>4</sup>
	14 1'x4'	D 0-10V Driver	SP1 Selectable 25W/30W/40W <sup>1</sup>			
	24 2'x4'	D 0-10V Driver	SP2 Selectable 30W/40W/50W <sup>2</sup>			

### NOTE:

- 40W is default setting, If need other wattage, please contact Customer Service in advance to change the setting in factory or change the setting in the field.
- 50W is default setting, If need other wattage, please contact Customer Service in advance to change the setting in factory or change the setting in the field.
- 3500K is default setting. If need other CCT please contact Customer Service in advance to change the setting in factory or change the setting in the field.
- Emergency battery back-up is for ambient temperatures of 32°F -95°F (0 °C -35°C). Emergency battery back-up is for 120-277V.
- White finish is standard. Custom finish colors are available at an additional charge. Please contact Customer Service for premium options.

## ACCESSORIES (ORDERED SEPARATELY)



### 90106K

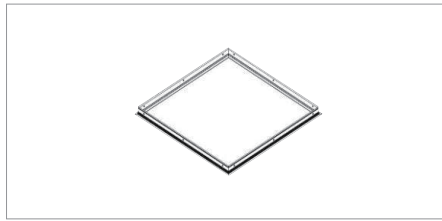
2'x2' Surface Mount Kit.

### 90122K

1'x4' Surface Mount Kit.

### 90123K

2'x4' Surface Mount Kit.



### 90139K

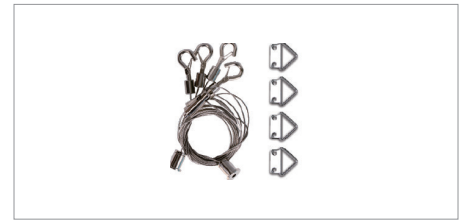
1'x4' Flange Kit.

### 90140K

2'x4' Flange Kit.

### 90141K

2'x2' Flange Kit.



### 90579

FLP-SK

Suspension Kit for 2'x2', 1'x4' and 2'x4' FLP (4pcs cables).

## PERFORMANCE DATA

Lumen values are measured by third party certified laboratories performed in accordance with IESNA LM-79-08 as well as Lighting Facts listed.

### Lumen Output

Wattage	Size	Nominal Output	CCT	CRI	LPW
25W	2'x2'/1'x4'	2750lm	4000K	>80	110
30W	2'x2'/1'x4'/2'x4'	3300lm	4000K	>80	110
40W	2'x2'/1'x4'/2'x4'	4400lm	4000K	>80	110
50W	2'x4'	5500lm	4000K	>80	110

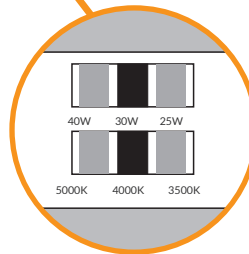
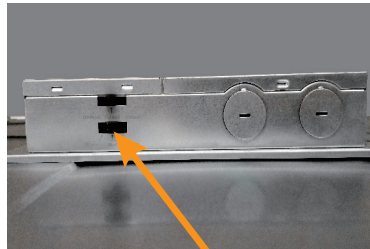
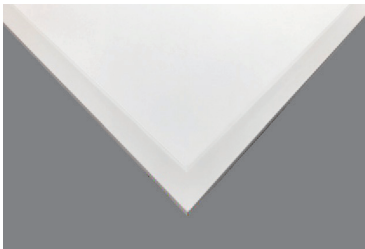
### Lumen Ambient Temperature (LAT) Multipliers

Use these factors to determine relative lumen output for average ambient temperature from -4-104°F (-20-40°C).

Ambient		Multiplier
Celsius	Fahrenheit	
0	32	1.02
10	50	1.01
20	68	1.00
25	77	1.00
30	86	1.00
40	104	0.99

Note: Actual performance may differ as a result of end-user environment and application. All values are design or typical values, measured under laboratory conditions at 25°C. Specifications subject to change without notice.

## FEATURES



## WARRANTY

5 year limited warranty.

Specifications subject to change without notice.

Ref#: 20260206